



# Sin3B Monoclonal Antibody

Catalog No	BYmab-01879
Isotype	IgG
Reactivity	Human;Rat;Mouse;
Applications	WB
Gene Name	SIN3B
Protein Name	Paired amphipathic helix protein Sin3b
Immunogen	The antiserum was produced against synthesized peptide derived from human SIN3B. AA range:221-270
Specificity	Sin3B Monoclonal Antibody detects endogenous levels of Sin3B protein.
Formulation	Liquid in PBS containing 50% glycerol, 0.5% BSA and 0.02% sodium azide.
Source	Monoclonal, Mouse,IgG
Purification	The antibody was affinity-purified from mouse antiserum by affinity-chromatography using epitope-specific immunogen.
Dilution	WB 1:500-2000
Concentration	1 mg/ml
Purity	≥90%
Storage Stability	-20°C/1 year
Synonyms	SIN3B; KIAA0700; Paired amphipathic helix protein Sin3b; Histone deacetylase complex subunit Sin3b; Transcriptional corepressor Sin3b
Observed Band	130kD
Cell Pathway	Nucleus .
Tissue Specificity	Brain,Duodenum,Lung,Skin,
Function	function:Acts as a transcriptional repressor. Interacts with MXI1 to repress MYC responsive genes and antagonize MYC oncogenic activities. Interacts with MAD-MAX heterodimers by binding to MAD. The heterodimer then represses transcription by tethering SIN3B to DNA. Also forms a complex with FOXK1 which represses transcription.,similarity:Contains 3 PAH (paired amphipathic helix) repeats.,subunit:Interacts with FOXK1/MNF, MXI, MAD, NCOR1 and SAP30. Interaction with SDS3 enhances the interaction with HDAC1 to form a complex. Interacts with MAD3, MAD4, MAEL, REST and SETDB1 (By similarity). Interacts with HCFC1.,

Nanjing BYabscience technology Co.,Ltd



## Background

function: Acts as a transcriptional repressor. Interacts with MXI1 to repress MYC responsive genes and antagonize MYC oncogenic activities. Interacts with MAD-MAX heterodimers by binding to MAD. The heterodimer then represses transcription by tethering SIN3B to DNA. Also forms a complex with FOXK1 which represses transcription. similarity: Contains 3 PAH (paired amphipathic helix) repeats. subunit: Interacts with FOXK1/MNF, MXI, MAD, NCOR1 and SAP30. Interaction with SDS3 enhances the interaction with HDAC1 to form a complex. Interacts with MAD3, MAD4, MAEL, REST and SETDB1 (By similarity). Interacts with HCFC1.

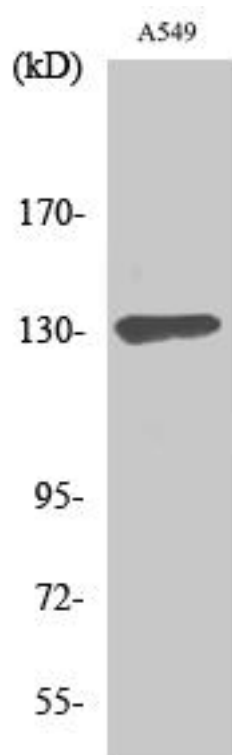
## matters needing attention

Avoid repeated freezing and thawing!

## Usage suggestions

This product can be used in immunological reaction related experiments. For more information, please consult technical personnel.

## Products Images



Western Blot analysis of various cells using Sin3B Monoclonal Antibody