



# MEF-2B Monoclonal Antibody

Catalog No	BYmab-01865
Isotype	IgG
Reactivity	Human;Mouse
Applications	WB
Gene Name	MEF2B
Protein Name	Myocyte-specific enhancer factor 2B
Immunogen	The antiserum was produced against synthesized peptide derived from human MEF2B. AA range:51-100
Specificity	MEF-2B Monoclonal Antibody detects endogenous levels of MEF-2B protein.
Formulation	Liquid in PBS containing 50% glycerol, 0.5% BSA and 0.02% sodium azide.
Source	Monoclonal, Mouse,IgG
Purification	The antibody was affinity-purified from mouse antiserum by affinity-chromatography using epitope-specific immunogen.
Dilution	WB 1:500-2000
Concentration	1 mg/ml
Purity	≥90%
Storage Stability	-20°C/1 year
Synonyms	MEF2B; XMEF2; Myocyte-specific enhancer factor 2B; RSRFR2; Serum response factor-like protein 2
Observed Band	38kD
Cell Pathway	Nucleus.
Tissue Specificity	Expressed in skeletal and cardiac muscle and brain.
Function	function:Transcriptional activator which binds specifically to the MEF2 element, 5'-YTA[AT](4)TAR-3', found in numerous muscle-specific genes. Activates transcription via this element. May be involved in muscle-specific and/or growth factor-related transcription.,similarity:Belongs to the MEF2 family.,similarity:Contains 1 MADS-box domain.,similarity:Contains 1 Mef2-type DNA-binding domain.,subunit:Interacts with HDAC7 (By similarity). Heterodimer. Interacts with HDAC9.,tissue specificity:Expressed in skeletal and cardiac muscle and brain.,

Nanjing BYabscience technology Co.,Ltd

网址: [www.njbybio.com](http://www.njbybio.com)

官方热线: 025-5229-8998

监督电话: 15950492658



## Background

This gene represents numerous read-through transcripts that span GeneID:729991 and 100271849. Many read-through transcripts are predicted to be nonsense-mediated decay (NMD) candidates, and are thought to be non-coding. Some transcripts are predicted to be caMABLE of translation reinitiation at a downstream AUG, resulting in expression of at least one isoform of myocyte enhancer factor 2B (MEF2B) from this read-through locus. At least one additional MEF2B variant and isoform can be expressed from a downstream promoter, and is annotated on GeneID:100271849. [provided by RefSeq, Oct 2010],

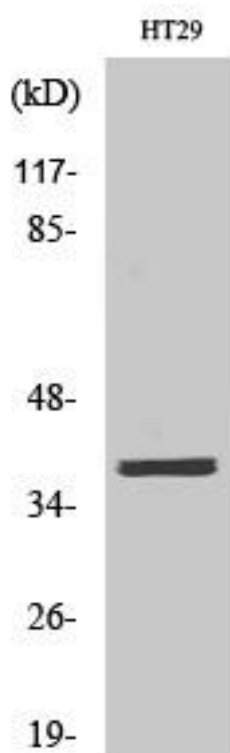
## matters needing attention

Avoid repeated freezing and thawing!

## Usage suggestions

This product can be used in immunological reaction related experiments. For more information, please consult technical personnel.

## Products Images



Western Blot analysis of various cells using MEF-2B Monoclonal Antibody