



# Mash2 Monoclonal Antibody

<b>Catalog No</b>	BYmab-01857
<b>Isotype</b>	IgG
<b>Reactivity</b>	Human;Mouse;Rat
<b>Applications</b>	WB
<b>Gene Name</b>	ASCL2
<b>Protein Name</b>	Achaete-scute homolog 2
<b>Immunogen</b>	Synthesized peptide derived from Mash2 . at AA range: 1-80
<b>Specificity</b>	Mash2 Monoclonal Antibody detects endogenous levels of Mash2 protein.
<b>Formulation</b>	Liquid in PBS containing 50% glycerol, 0.5% BSA and 0.02% sodium azide.
<b>Source</b>	Monoclonal, Mouse,IgG
<b>Purification</b>	The antibody was affinity-purified from mouse antiserum by affinity-chromatography using epitope-specific immunogen.
<b>Dilution</b>	WB 1:500-2000
<b>Concentration</b>	1 mg/ml
<b>Purity</b>	≥90%
<b>Storage Stability</b>	-20°C/1 year
<b>Synonyms</b>	ASCL2; BHLHA45; HASH2; Achaete-scute homolog 2; ASH-2; hASH2; Class A basic helix-loop-helix protein 45; bHLHa45; Mash2
<b>Observed Band</b>	25kD
<b>Cell Pathway</b>	Nucleus .
<b>Tissue Specificity</b>	Expressed specifically in the extravillous trophoblasts of the developing placenta.
<b>Function</b>	function:AS-C proteins are involved in the determination of the neuronal precursors in the peripheral nervous system and the central nervous system.,similarity:Contains 1 basic helix-loop-helix (bHLH) domain.,subunit:Efficient DNA binding requires dimerization with another bHLH protein.,tissue specificity:Expressed specifically in the extravillous trophoblasts of the developing placenta.,
<b>Background</b>	achaete-scute family bHLH transcription factor 2(ASCL2) Homo sapiens This gene is a member of the basic helix-loop-helix (BHLH) family of transcription factors. It activates transcription by binding to the E box (5'&apos;-CANNTG-3'&apos;). Dimerization with other BHLH proteins is required

**Nanjing BYabscience technology Co.,Ltd**



for efficient DNA binding. Involved in the determination of the neuronal precursors in the peripheral nervous system and the central nervous system. [provided by RefSeq, Jul 2008],

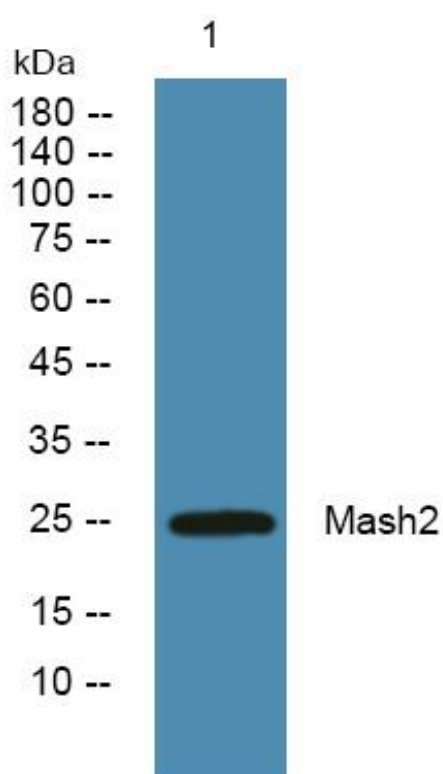
**matters needing attention**

Avoid repeated freezing and thawing!

**Usage suggestions**

This product can be used in immunological reaction related experiments. For more information, please consult technical personnel.

## Products Images



Western Blot analysis of various cells using Mash2 Monoclonal Antibody