



HEI10 Monoclonal Antibody

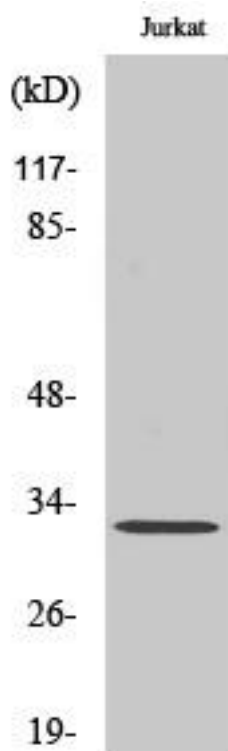
Catalog No	BYmab-01769
Isotype	IgG
Reactivity	Human;Rat;Mouse;
Applications	WB
Gene Name	CCNB1IP1
Protein Name	E3 ubiquitin-protein ligase CCNB1IP1
Immunogen	The antiserum was produced against synthesized peptide derived from human CCNB1IP1. AA range:201-250
Specificity	HEI10 Monoclonal Antibody detects endogenous levels of HEI10 protein.
Formulation	Liquid in PBS containing 50% glycerol, 0.5% BSA and 0.02% sodium azide.
Source	Monoclonal, Mouse,IgG
Purification	The antibody was affinity-purified from mouse antiserum by affinity-chromatography using epitope-specific immunogen.
Dilution	WB 1:500-2000
Concentration	1 mg/ml
Purity	≥90%
Storage Stability	-20°C/1 year
Synonyms	CCNB1IP1; C14orf18; HEI10; E3 ubiquitin-protein ligase CCNB1IP1; Cyclin-B1-interacting protein 1; Human enhancer of invasion 10
Observed Band	32kD
Cell Pathway	Nucleus. Chromosome. Associates to the synaptonemal complex.
Tissue Specificity	Highly expressed in heart. Detected at intermediate levels in liver and kidney, and at low levels in placenta, brain and lung.
Function	function:E3 ubiquitin-protein ligase. Modulates cyclin B levels and participates in the regulation of cell cycle progression through the G2 phase. Overexpression causes delayed entry into mitosis.,pathway:Protein modification; protein ubiquitination.,PTM:Phosphorylated by CDC2 on serine or threonine residues (in vitro).,PTM:Ubiquitinated; autoubiquitinated.,similarity:Contains 1 RING-type zinc finger.,subcellular location:May associate with segregating chromosomes during metaphase and anaphase.,subunit:Binds CCNB1 and UBE2L3.,tissue specificity:Highly expressed in heart. Detected at intermediate levels in liver and kidney, and at low levels in placenta, brain and lung.,

Nanjing BYabscience technology Co.,Ltd



Background	HEI10 is a member of the E3 ubiquitin ligase family and functions in progression of the cell cycle through G(2)/M.[supplied by OMIM, Apr 2004],
matters needing attention	Avoid repeated freezing and thawing!
Usage suggestions	This product can be used in immunological reaction related experiments. For more information, please consult technical personnel.

Products Images



Western Blot analysis of various cells using HEI10 Monoclonal Antibody