



# GIDRP88 Monoclonal Antibody

<b>Catalog No</b>	BYmab-01749
<b>Isotype</b>	IgG
<b>Reactivity</b>	Human;Mouse;Monkey
<b>Applications</b>	WB
<b>Gene Name</b>	R3HCC1L
<b>Protein Name</b>	R3H and coiled-coil domain-containing protein 1-like
<b>Immunogen</b>	The antiserum was produced against synthesized peptide derived from human GIDRP88. AA range:721-770
<b>Specificity</b>	GIDRP88 Monoclonal Antibody detects endogenous levels of GIDRP88 protein.
<b>Formulation</b>	Liquid in PBS containing 50% glycerol, 0.5% BSA and 0.02% sodium azide.
<b>Source</b>	Monoclonal, Mouse,IgG
<b>Purification</b>	The antibody was affinity-purified from mouse antiserum by affinity-chromatography using epitope-specific immunogen.
<b>Dilution</b>	WB 1:500-2000
<b>Concentration</b>	1 mg/ml
<b>Purity</b>	≥90%
<b>Storage Stability</b>	-20°C/1 year
<b>Synonyms</b>	R3HCC1L; C10orf28; GIDRP88; R3H and coiled-coil domain-containing protein 1-like; Growth inhibition and differentiation-related protein 88; Putative mitochondrial space protein 32.1
<b>Observed Band</b>	88kD
<b>Cell Pathway</b>	exon-exon junction complex,
<b>Tissue Specificity</b>	Expressed in placenta.
<b>Function</b>	tissue specificity:Expressed in placenta.,
<b>Background</b>	tissue specificity:Expressed in placenta.,
<b>matters needing attention</b>	Avoid repeated freezing and thawing!

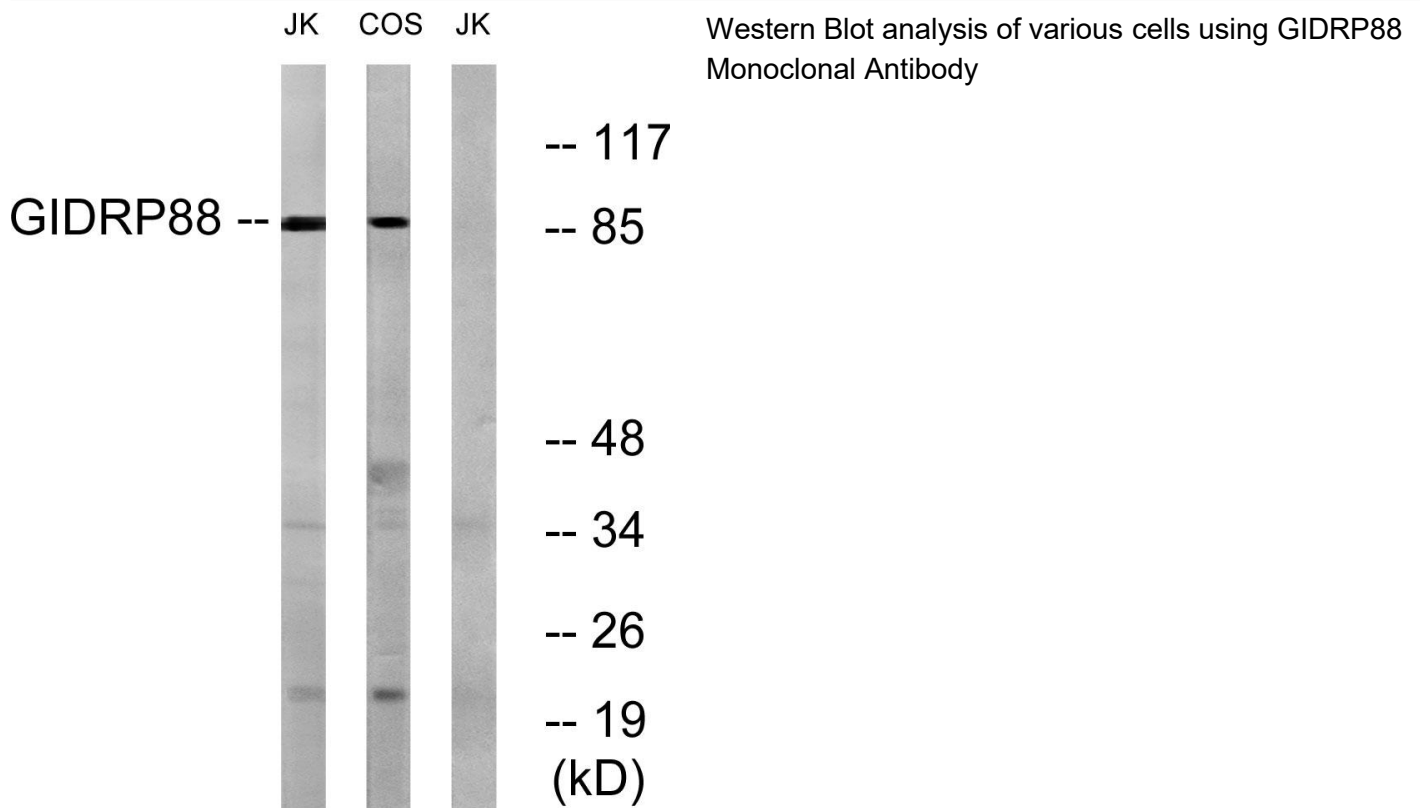
**Nanjing BYabscience technology Co.,Ltd**



### Usage suggestions

This product can be used in immunological reaction related experiments. For more information, please consult technical personnel.

### Products Images



Nanjing BYabs science technology Co.,Ltd

网址: [www.njbybio.com](http://www.njbybio.com)

官方热线: 025-5229-8998

监督电话: 15950492658