



FoxE1 Monoclonal Antibody

Catalog No	BYmab-01724
Isotype	IgG
Reactivity	Human;Mouse;Rat
Applications	WB
Gene Name	FOXE1
Protein Name	Forkhead box protein E1
Immunogen	The antiserum was produced against synthesized peptide derived from human TTF2. AA range:10-59
Specificity	FoxE1 Monoclonal Antibody detects endogenous levels of FoxE1 protein.
Formulation	Liquid in PBS containing 50% glycerol, 0.5% BSA and 0.02% sodium azide.
Source	Monoclonal, Mouse,IgG
Purification	The antibody was affinity-purified from mouse antiserum by affinity-chromatography using epitope-specific immunogen.
Dilution	WB 1:500-2000
Concentration	1 mg/ml
Purity	≥90%
Storage Stability	-20°C/1 year
Synonyms	FOXE1; FKHL15; FOXE2; TITF2; TTF2; Forkhead box protein E1; Forkhead box protein E2; Forkhead-related protein FKHL15; HFKH4; HNF-3/fork head-like protein 5; HFKL5; Thyroid transcription factor 2; TTF-2
Observed Band	34kD
Cell Pathway	Nucleus .
Tissue Specificity	Detected in adult brain, placenta, lung, liver, skeletal muscle, kidney, pancreas, heart, colon, small intestine testis and thymus. Expression was strongest in heart and pancreas.
Function	disease:Defects in FOXE1 are the cause of Bamforth-Lazarus syndrome [MIM:241850]. A disease associated with thyroid agenesis, cleft palate and choanal atresia.,function:Probable transcription factor. Could be involved in thyroid gland organogenesis.,polymorphism:An alanine stretch that varies from 12 to 19 residues is present. This polymorphisms can be used as a marker to study the role of FOXE1 in other cases of thyroid dysgenesis, especially in familial cases.,PTM:Phosphorylated.,sequence caution:Several conflicts.,similarity:Contains 1 fork-head DNA-binding domain.,tissue

Nanjing BYabscience technology Co.,Ltd



specificity: Detected in adult brain, placenta, lung, liver, skeletal muscle, kidney, pancreas, heart, colon, small intestine testis and thymus. Expression was strongest in heart and pancreas.,

Background

This intronless gene belongs to the forkhead family of transcription factors, which is characterized by a distinct forkhead domain. This gene functions as a thyroid transcription factor which likely plays a crucial role in thyroid morphogenesis. Mutations in this gene are associated with congenital hypothyroidism and cleft palate with thyroid dysgenesis. The map localization of this gene suggests it may also be a candidate gene for squamous cell epithelioma and hereditary sensory neuropathy type I. [provided by RefSeq, Jul 2008],

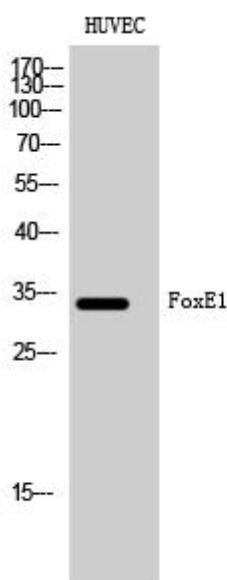
matters needing attention

Avoid repeated freezing and thawing!

Usage suggestions

This product can be used in immunological reaction related experiments. For more information, please consult technical personnel.

Products Images



Western Blot analysis of various cells using FoxE1 Monoclonal Antibody