



Fliz1 Monoclonal Antibody

Catalog No	BYmab-01714
Isotype	IgG
Reactivity	Human;Rat;Mouse;
Applications	WB
Gene Name	ZC3H8
Protein Name	Zinc finger CCCH domain-containing protein 8
Immunogen	The antiserum was produced against synthesized peptide derived from human ZC3H8. AA range:81-130
Specificity	Fliz1 Monoclonal Antibody detects endogenous levels of Fliz1 protein.
Formulation	Liquid in PBS containing 50% glycerol, 0.5% BSA and 0.02% sodium azide.
Source	Monoclonal, Mouse,IgG
Purification	The antibody was affinity-purified from mouse antiserum by affinity-chromatography using epitope-specific immunogen.
Dilution	WB 1:500-2000
Concentration	1 mg/ml
Purity	≥90%
Storage Stability	-20°C/1 year
Synonyms	ZC3H8; ZC3HDC8; Zinc finger CCCH domain-containing protein 8
Observed Band	40kD
Cell Pathway	Nucleus . Colocalizes with coilin in subnuclear cajal and histone locus bodies. Translocates in the LEC complex to cajal and histone locus bodies at snRNA genes in a ICE1-dependent manner. Associates to transcriptionally active chromatin at snRNA genes.
Tissue Specificity	Skin,
Function	PTM:Phosphorylated upon DNA damage, probably by ATM or ATR.,similarity:Contains 3 C3H1-type zinc fingers.,
Background	PTM:Phosphorylated upon DNA damage, probably by ATM or ATR.,similarity:Contains 3 C3H1-type zinc fingers.,
matters needing attention	Avoid repeated freezing and thawing!

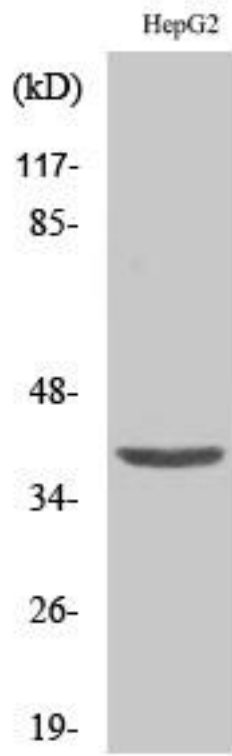
Nanjing BYabscience technology Co.,Ltd



Usage suggestions

This product can be used in immunological reaction related experiments. For more information, please consult technical personnel.

Products Images



Western Blot analysis of various cells using Fliz1 Monoclonal Antibody