



# DNA pol ⅰ Monoclonal Antibody

<b>Catalog No</b>	BYmab-01663
<b>Isotype</b>	IgG
<b>Reactivity</b>	Human;Rat;Mouse;
<b>Applications</b>	WB
<b>Gene Name</b>	POLI
<b>Protein Name</b>	DNA polymerase iota
<b>Immunogen</b>	The antiserum was produced against synthesized peptide derived from human POLI. AA range:641-690
<b>Specificity</b>	DNA pol ⅰ Monoclonal Antibody detects endogenous levels of DNA pol ⅰ protein.
<b>Formulation</b>	Liquid in PBS containing 50% glycerol, 0.5% BSA and 0.02% sodium azide.
<b>Source</b>	Monoclonal, Mouse,IgG
<b>Purification</b>	The antibody was affinity-purified from mouse antiserum by affinity-chromatography using epitope-specific immunogen.
<b>Dilution</b>	WB 1:500-2000
<b>Concentration</b>	1 mg/ml
<b>Purity</b>	≥90%
<b>Storage Stability</b>	-20°C/1 year
<b>Synonyms</b>	POLI; RAD30B; DNA polymerase iota; Eta2; RAD30 homolog B
<b>Observed Band</b>	85kD
<b>Cell Pathway</b>	Nucleus . Binding to ubiquitin mediates localization to replication forks after UV-induced DNA damage. .
<b>Tissue Specificity</b>	Ubiquitous. Highly expressed in testis.
<b>Function</b>	catalytic activity:Deoxynucleoside triphosphate + DNA(n) = diphosphate + DNA(n+1).,cofactor:Magnesium.,domain:The catalytic core consists of fingers, palm and thumb subdomains, but the fingers and thumb subdomains are much smaller than in high-fidelity polymerases; residues from five sequence motifs of the Y-family cluster around an active site cleft that can accommodate DNA and nucleotide substrates with relaxed geometric constraints, with consequently higher rates of misincorporation and low processivity.,function:Error-prone DNA polymerase specifically involved in DNA repair. Plays an important role in translesion synthesis, where the normal high-fidelity DNA polymerases cannot proceed and DNA synthesis stalls. Favors Hoogsteen base-pairing in the active

**Nanjing BYabscience technology Co.,Ltd**



site. Inserts the correct base with high-fidelity opposite an adenosine template. Exhibits low fidelity and efficiency opposite a th

## Background

catalytic activity:Deoxynucleoside triphosphate + DNA(n) = diphosphate + DNA(n+1).,cofactor:Magnesium.,domain:The catalytic core consists of fingers, palm and thumb subdomains, but the fingers and thumb subdomains are much smaller than in high-fidelity polymerases; residues from five sequence motifs of the Y-family cluster around an active site cleft that can accommodate DNA and nucleotide substrates with relaxed geometric constraints, with consequently higher rates of misincorporation and low processivity.,function:Error-prone DNA polymerase specifically involved in DNA repair. Plays an important role in translesion synthesis, where the normal high-fidelity DNA polymerases cannot proceed and DNA synthesis stalls. Favors Hoogsteen base-pairing in the active site. Inserts the correct base with high-fidelity opposite an adenosine template. Exhibits low fidelity and efficiency opposite a thymidine template, where it will preferentially insert guanosine. May play a role in hypermutation of immunoglobulin genes. Forms a Schiff base with 5'-deoxyribose phosphate at abasic sites, but may not have lyase activity.,similarity:Belongs to the DNA polymerase type-Y family.,similarity:Contains 1 umuC domain.,subcellular location:Accumulates at replication forks after DNA damage.,subunit:Binds REV1L (By similarity). Binds POLH.,tissue specificity:Ubiquitous. Highly expressed in testis.,

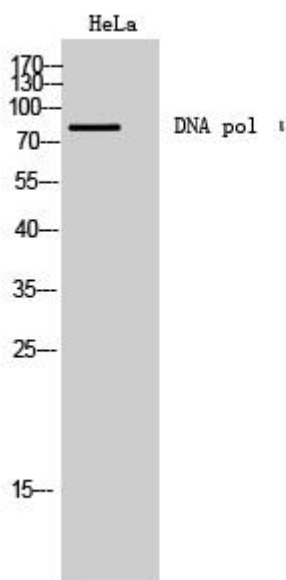
## matters needing attention

Avoid repeated freezing and thawing!

## Usage suggestions

This product can be used in immunological reaction related experiments. For more information, please consult technical personnel.

## Products Images



Western Blot analysis of various cells using DNA pol antibody  
Monoclonal Antibody

Nanjing BYabscience technology Co.,Ltd