



CTDSP1 Monoclonal Antibody

Catalog No	BYmab-01635
Isotype	IgG
Reactivity	Human;Mouse;Rat
Applications	WB
Gene Name	CTDSP1
Protein Name	Carboxy-terminal domain RNA polymerase II polypeptide A small phosphatase 1
Immunogen	The antiserum was produced against synthesized peptide derived from human CTDSP1. AA range:1-50
Specificity	CTDSP1 Monoclonal Antibody detects endogenous levels of CTDSP1 protein.
Formulation	Liquid in PBS containing 50% glycerol, 0.5% BSA and 0.02% sodium azide.
Source	Monoclonal, Mouse,IgG
Purification	The antibody was affinity-purified from mouse antiserum by affinity-chromatography using epitope-specific immunogen.
Dilution	WB 1:500-2000
Concentration	1 mg/ml
Purity	≥90%
Storage Stability	-20°C/1 year
Synonyms	CTDSP1; NIF3; NLIIF; SCP1; Carboxy-terminal domain RNA polymerase II polypeptide A small phosphatase 1; Nuclear LIM interactor-interacting factor 3; NLI-IF; NLI-interacting factor 3; Small C-terminal domain phosphatase 1; SCP1; Small CTD ph
Observed Band	30kD
Cell Pathway	Nucleus . Colocalizes with RNA polymerase II.
Tissue Specificity	Expression is restricted to non-neuronal tissues. Highest expression in skeletal muscle, spleen, lung and placenta.
Function	catalytic activity:A phosphoprotein + H(2)O = a protein + phosphate.,similarity:Contains 1 FCP1 homology domain.,subunit:May interact with LDB1 .,tissue specificity:Ubiquitously expressed, with highest expression in spleen, lung and placenta.,
Background	CTD small phosphatase 1(CTDSP1) Homo sapiens This gene encodes a member of the small C-terminal domain phosphatase (SCP) family of nuclear

Nanjing BYabscience technology Co.,Ltd



phosphatases. These proteins play a role in transcriptional regulation through specific dephosphorylation of phosphoserine 5 within tandem heptapeptide repeats of the C-terminal domain of RNA polymerase II. The encoded protein plays a role in neuronal gene silencing in non-neuronal cells, and may also inhibit osteoblast differentiation. Alternatively spliced transcript variants encoding multiple isoforms have been observed for this gene. [provided by RefSeq, Oct 2011],

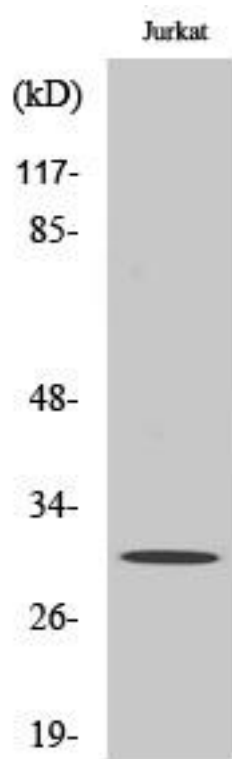
matters needing attention

Avoid repeated freezing and thawing!

Usage suggestions

This product can be used in immunological reaction related experiments. For more information, please consult technical personnel.

Products Images



Western Blot analysis of various cells using CTDSP1 Monoclonal Antibody