



# CCDC45 Monoclonal Antibody

Catalog No	BYmab-01598
Isotype	IgG
Reactivity	Human;Mouse;Rat
Applications	WB
Gene Name	CEP95
Protein Name	Centrosomal protein of 95 kDa
Immunogen	The antiserum was produced against synthesized peptide derived from human CCDC45. AA range:591-640
Specificity	CCDC45 Monoclonal Antibody detects endogenous levels of CCDC45 protein.
Formulation	Liquid in PBS containing 50% glycerol, 0.5% BSA and 0.02% sodium azide.
Source	Monoclonal, Mouse,IgG
Purification	The antibody was affinity-purified from mouse antiserum by affinity-chromatography using epitope-specific immunogen.
Dilution	WB 1:500-2000
Concentration	1 mg/ml
Purity	≥90%
Storage Stability	-20°C/1 year
Synonyms	CEP95; CCDC45; CEP45; Centrosomal protein of 95 kDa; Coiled-coil domain-containing protein 45
Observed Band	95kD
Cell Pathway	Cytoplasm, cytoskeleton, microtubule organizing center, centrosome . Cytoplasm, cytoskeleton, spindle pole .
Tissue Specificity	Lymph,Lymph node,Testis,
Function	PTM:Phosphorylated upon DNA damage, probably by ATM or ATR.,
Background	PTM:Phosphorylated upon DNA damage, probably by ATM or ATR.,
matters needing attention	Avoid repeated freezing and thawing!

Nanjing BYabscience technology Co.,Ltd

网址: [www.njbybio.com](http://www.njbybio.com)

官方热线: 025-5229-8998

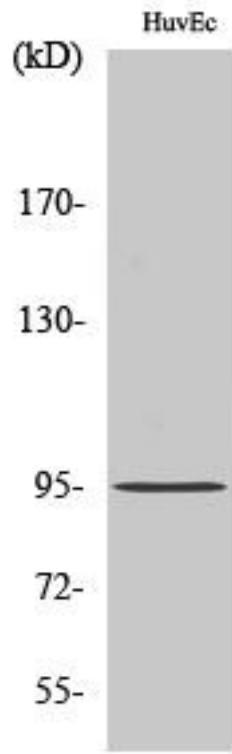
监督电话: 15950492658



### Usage suggestions

This product can be used in immunological reaction related experiments. For more information, please consult technical personnel.

## Products Images



Western Blot analysis of various cells using CCDC45 Monoclonal Antibody

Nanjing BYabs science technology Co.,Ltd

网址: [www.njbybio.com](http://www.njbybio.com)

官方热线: 025-5229-8998

监督电话: 15950492658