



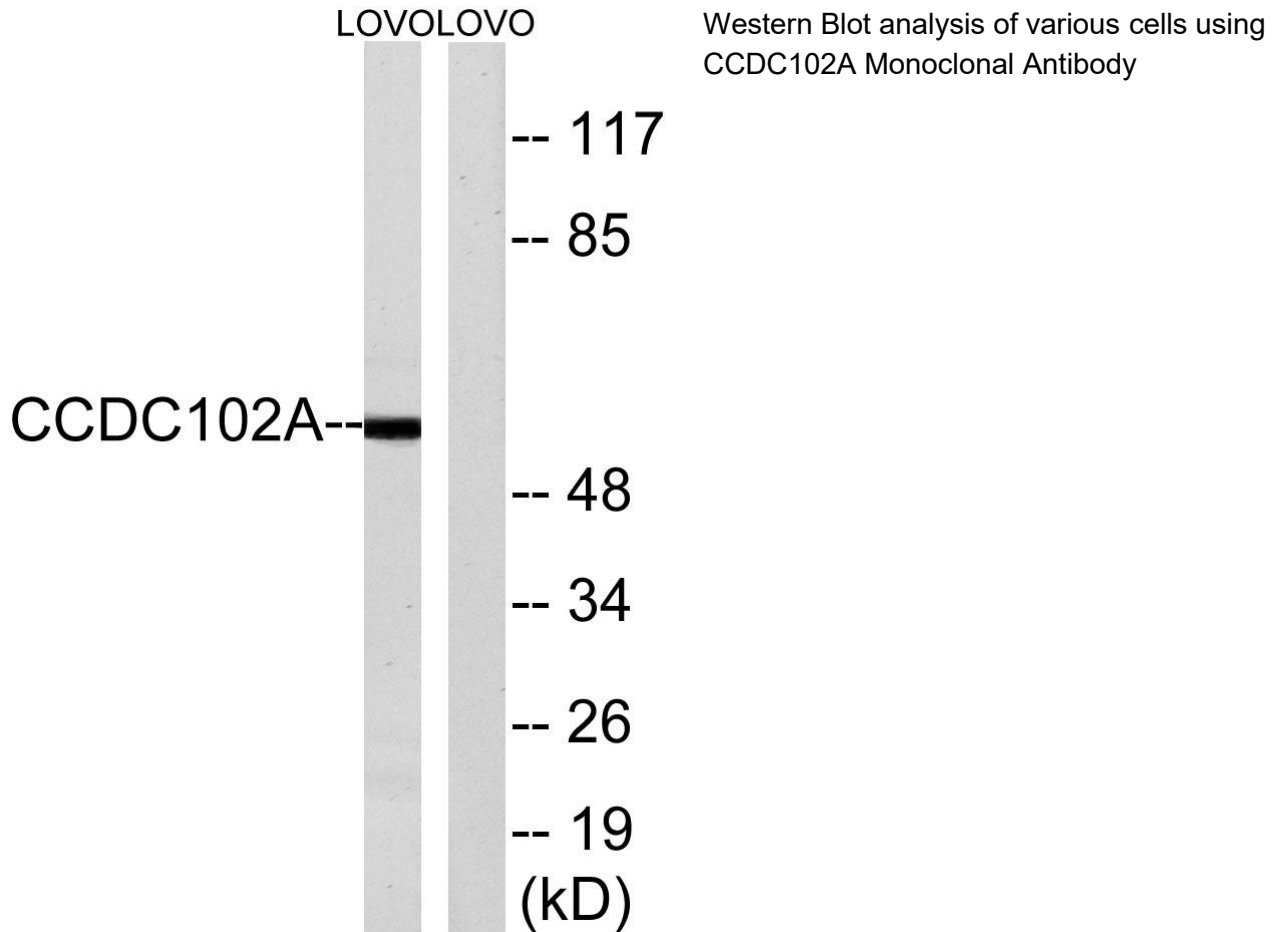
CCDC102A Monoclonal Antibody

Catalog No	BYmab-01594
Isotype	IgG
Reactivity	Human;Mouse
Applications	WB
Gene Name	CCDC102A
Protein Name	Coiled-coil domain-containing protein 102A
Immunogen	The antiserum was produced against synthesized peptide derived from human CCDC102A. AA range:341-390
Specificity	CCDC102A Monoclonal Antibody detects endogenous levels of CCDC102A protein.
Formulation	Liquid in PBS containing 50% glycerol, 0.5% BSA and 0.02% sodium azide.
Source	Monoclonal, Mouse,IgG
Purification	The antibody was affinity-purified from mouse antiserum by affinity-chromatography using epitope-specific immunogen.
Dilution	WB 1:500-2000
Concentration	1 mg/ml
Purity	≥90%
Storage Stability	-20°C/1 year
Synonyms	CCDC102A; Coiled-coil domain-containing protein 102A
Observed Band	55kD
Cell Pathway	myosin complex,
Tissue Specificity	Brain,Placenta,Uterus,
Function	
Background	CCDC102A (Coiled-Coil Domain Containing 102A) is a Protein Coding gene. An important paralog of this gene is CCDC102B.
matters needing attention	Avoid repeated freezing and thawing!
Usage suggestions	This product can be used in immunological reaction related experiments. For more information, please consult technical personnel.

Nanjing BYabscience technology Co.,Ltd



Products Images



Nanjing BYabs science technology Co.,Ltd

网址: www.njbybio.com

官方热线: 025-5229-8998

监督电话: 15950492658