



CBX6 Monoclonal Antibody

Catalog No	BYmab-01593
Isotype	IgG
Reactivity	Human;Mouse;Rat
Applications	WB
Gene Name	CBX6
Protein Name	Chromobox protein homolog 6
Immunogen	The antiserum was produced against synthesized peptide derived from human CBX6. AA range:10-59
Specificity	CBX6 Monoclonal Antibody detects endogenous levels of CBX6 protein.
Formulation	Liquid in PBS containing 50% glycerol, 0.5% BSA and 0.02% sodium azide.
Source	Monoclonal, Mouse,IgG
Purification	The antibody was affinity-purified from mouse antiserum by affinity-chromatography using epitope-specific immunogen.
Dilution	WB 1:500-2000
Concentration	1 mg/ml
Purity	≥90%
Storage Stability	-20°C/1 year
Synonyms	CBX6; Chromobox protein homolog 6
Observed Band	44kD
Cell Pathway	Nucleus . Chromosome . Uniformly distributed in the nucleoplasm (PubMed:18927235). Localizes to the inactivated X chromosome in females (By similarity). .
Tissue Specificity	Lung,Uterus,
Function	function:Involved in maintaining the transcriptionally repressive state of genes. Modifies chromatin, rendering it heritably changed in its expressibility.,similarity:Contains 1 chromo domain.,subunit:Component of the chromatin-associated polycomb complex (PcG).,
Background	function:Involved in maintaining the transcriptionally repressive state of genes. Modifies chromatin, rendering it heritably changed in its expressibility.,similarity:Contains 1 chromo domain.,subunit:Component of the chromatin-associated polycomb complex (PcG).,

Nanjing BYabscience technology Co.,Ltd



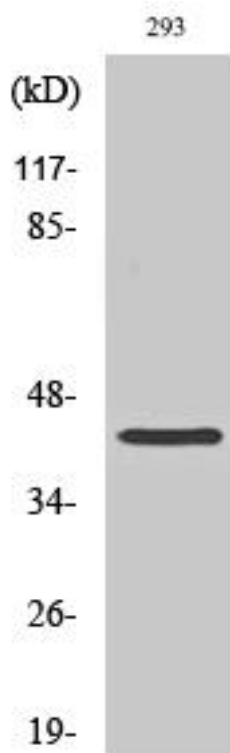
matters needing attention

Avoid repeated freezing and thawing!

Usage suggestions

This product can be used in immunological reaction related experiments. For more information, please consult technical personnel.

Products Images



Western Blot analysis of various cells using CBX6 Monoclonal Antibody