



C/EBP δ/ϵ Monoclonal Antibody

Catalog No	BYmab-01582
Isotype	IgG
Reactivity	Human;Mouse;Rat
Applications	WB
Gene Name	CEBPD/CEBPE
Protein Name	CCAAT/enhancer-binding protein delta/epsilon
Immunogen	The antiserum was produced against synthesized peptide derived from human CEBPD/E. AA range:171-220
Specificity	C/EBP δ/ϵ Monoclonal Antibody detects endogenous levels of C/EBP δ/ϵ protein.
Formulation	Liquid in PBS containing 50% glycerol, 0.5% BSA and 0.02% sodium azide.
Source	Monoclonal, Mouse,IgG
Purification	The antibody was affinity-purified from mouse antiserum by affinity-chromatography using epitope-specific immunogen.
Dilution	WB 1:500-2000
Concentration	1 mg/ml
Purity	$\geq 90\%$
Storage Stability	$-20^{\circ}\text{C}/1$ year
Synonyms	CEBPD; CCAAT/enhancer-binding protein delta; C/EBP delta; Nuclear factor NF-IL6-beta; NF-IL6-beta; CEBPE; CCAAT/enhancer-binding protein epsilon; C/EBP epsilon
Observed Band	28kD
Cell Pathway	Nucleus .
Tissue Specificity	Cerebellum,Placenta,
Function	function:C/EBP is a DNA-binding protein that recognizes two different motifs: the CCAAT homology common to many promoters and the enhanced core homology common to many enhancers. Important transcriptional activator in the regulation of genes involved in immune and inflammatory responses, may play an important role in the regulation of the several genes associated with activation and/or differentiation of macrophages.,similarity:Belongs to the bZIP family. C/EBP subfamily.,similarity:Contains 1 bZIP domain.,subunit:Binds DNA as a dimer and can form stable heterodimers with C/EBP alpha. Interacts with SPI1/PU.1.,

Nanjing BYabscience technology Co.,Ltd



Background

The protein encoded by this intronless gene is a bZIP transcription factor which can bind as a homodimer to certain DNA regulatory regions. It can also form heterodimers with the related protein CEBP-alpha. The encoded protein is important in the regulation of genes involved in immune and inflammatory responses, and may be involved in the regulation of genes associated with activation and/or differentiation of macrophages. The cytogenetic location of this locus has been reported as both 8p11 and 8q11. [provided by RefSeq, Sep 2010],

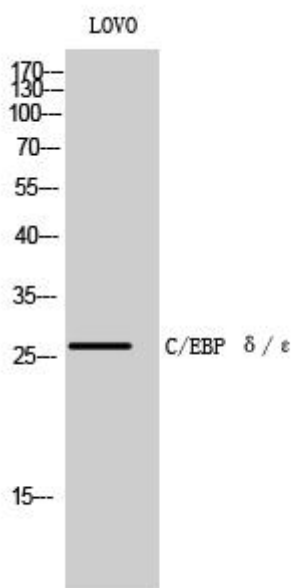
matters needing attention

Avoid repeated freezing and thawing!

Usage suggestions

This product can be used in immunological reaction related experiments. For more information, please consult technical personnel.

Products Images



Western Blot analysis of various cells using C/EBP δ / ϵ Monoclonal Antibody