



# ATF-6 $\beta$ Monoclonal Antibody

Catalog No	BYmab-01556
Isotype	IgG
Reactivity	Human;Rat;Mouse;
Applications	WB
Gene Name	ATF6B
Protein Name	Cyclic AMP-dependent transcription factor ATF-6 beta
Immunogen	The antiserum was produced against synthesized peptide derived from human ATF6B. AA range:401-450
Specificity	ATF-6 $\beta$ Monoclonal Antibody detects endogenous levels of ATF-6 $\beta$ protein.
Formulation	Liquid in PBS containing 50% glycerol, 0.5% BSA and 0.02% sodium azide.
Source	Monoclonal, Mouse,IgG
Purification	The antibody was affinity-purified from mouse antiserum by affinity-chromatography using epitope-specific immunogen.
Dilution	WB 1:500-2000
Concentration	1 mg/ml
Purity	$\geq 90\%$
Storage Stability	-20°C/1 year
Synonyms	ATF6B; CREBL1; G13; Cyclic AMP-dependent transcription factor ATF-6 beta; cAMP-dependent transcription factor ATF-6 beta; Activating transcription factor 6 beta; ATF6-beta; Protein G13; cAMP response element-binding protein-related protein;
Observed Band	90kD
Cell Pathway	Endoplasmic reticulum membrane ; Single-pass type II membrane protein .; [Processed cyclic AMP-dependent transcription factor ATF-6 beta]: Nucleus . Under ER stress the cleaved N-terminal cytoplasmic domain translocates into the nucleus. .
Tissue Specificity	Ubiquitous.
Function	domain:The basic domain functions as a nuclear localization signal.,domain:The basic leucine-zipper domain is sufficient for association with the NF-Y trimer and binding to ERSE.,function:Transcriptional factor that acts in the unfolded protein response (UPR) pathway by activating UPR target genes induced during ER stress. Binds DNA on the 5'-CCAC[GA]-3' half of the ER stress response element

Nanjing BYabscience technology Co.,Ltd



(ERSE) (5'-CCAATN(9)CCAC[GA]-3') when NF-Y is bound to ERSE.,PTM:During unfolded protein response an approximative 60 kDa fragment containing the cytoplasmic transcription factor domain is released by proteolysis. The cleavage is probably performed sequentially by site-1 and site-2 proteases.,PTM:N-glycosylated.,similarity:Belongs to the bZIP family.,similarity:Belongs to the bZIP family. ATF subfamily.,similarity:Contains 1 bZIP domain.,subcellular location:Under ER stress the cleaved N-terminal cy

## Background

The protein encoded by this gene is a transcription factor in the unfolded protein response (UPR) pathway during ER stress. Either as a homodimer or as a heterodimer with ATF6-alpha, the encoded protein binds to the ER stress response element, interacting with nuclear transcription factor Y to activate UPR target genes. The protein is normally found in the membrane of the endoplasmic reticulum; however, under ER stress, the N-terminal cytoplasmic domain is cleaved from the rest of the protein and translocates to the nucleus. Two transcript variants encoding different isoforms have been found for this gene. [provided by RefSeq, Oct 2008],

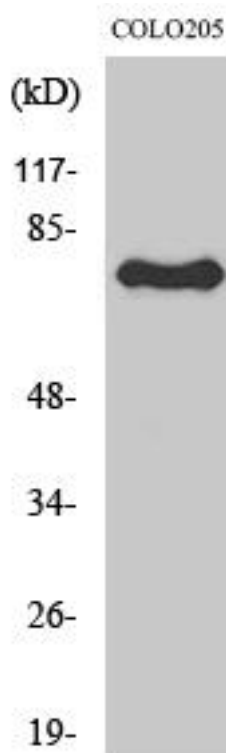
## matters needing attention

Avoid repeated freezing and thawing!

## Usage suggestions

This product can be used in immunological reaction related experiments. For more information, please consult technical personnel.

## Products Images



Western Blot analysis of various cells using ATF-6  $\beta$  Monoclonal Antibody