



# A-Myb Monoclonal Antibody

<b>Catalog No</b>	BYmab-01528
<b>Isotype</b>	IgG
<b>Reactivity</b>	Human;Mouse
<b>Applications</b>	WB
<b>Gene Name</b>	MYBL1
<b>Protein Name</b>	Myb-related protein A
<b>Immunogen</b>	The antiserum was produced against synthesized peptide derived from human MYB-A. AA range:231-280
<b>Specificity</b>	A-Myb Monoclonal Antibody detects endogenous levels of A-Myb protein.
<b>Formulation</b>	Liquid in PBS containing 50% glycerol, 0.5% BSA and 0.02% sodium azide.
<b>Source</b>	Monoclonal, Mouse,IgG
<b>Purification</b>	The antibody was affinity-purified from mouse antiserum by affinity-chromatography using epitope-specific immunogen.
<b>Dilution</b>	WB 1:500-2000
<b>Concentration</b>	1 mg/ml
<b>Purity</b>	≥90%
<b>Storage Stability</b>	-20°C/1 year
<b>Synonyms</b>	MYBL1; AMYB; Myb-related protein A; A-Myb; Myb-like protein 1
<b>Observed Band</b>	85kD
<b>Cell Pathway</b>	Nucleus .
<b>Tissue Specificity</b>	Expressed in a variety of lymphoid and solid tumor lines cultured in vitro.
<b>Function</b>	function:Strong transcriptional activator; DNA-binding protein that specifically recognize the sequence 5'-YAAC[GT]G-3'. Could have a role in the proliferation and/or differentiation of neurogenic, spermatogenic and B-lymphoid cells.,similarity:Contains 3 HTH myb-type DNA-binding domains.,subunit:Component of the DREAM complex (also named LINC complex) at least composed of E2F4, E2F5, LIN9, LIN37, LIN52, LIN54, MYBL1, MYBL2, RBL1, RBL2, RBBP4, TFDP1 and TFDP2. The complex exists in quiescent cells where it represses cell cycle-dependent genes. It dissociates in S phase when LIN9, LIN37, LIN52 and LIN54 form a subcomplex that binds to MYBL2.,tissue specificity:Expressed in a variety of lymphoid and solid tumor lines cultured in vitro.,

**Nanjing BYabscience technology Co.,Ltd**



## Background

function: Strong transcriptional activator; DNA-binding protein that specifically recognize the sequence 5'-YAAC[GT]G-3'. Could have a role in the proliferation and/or differentiation of neurogenic, spermatogenic and B-lymphoid cells., similarity: Contains 3 HTH myb-type DNA-binding domains., subunit: Component of the DREAM complex (also named LINC complex) at least composed of E2F4, E2F5, LIN9, LIN37, LIN52, LIN54, MYBL1, MYBL2, RBL1, RBL2, RBBP4, TFDP1 and TFDP2. The complex exists in quiescent cells where it represses cell cycle-dependent genes. It dissociates in S phase when LIN9, LIN37, LIN52 and LIN54 form a subcomplex that binds to MYBL2., tissue specificity: Expressed in a variety of lymphoid and solid tumor lines cultured in vitro.,

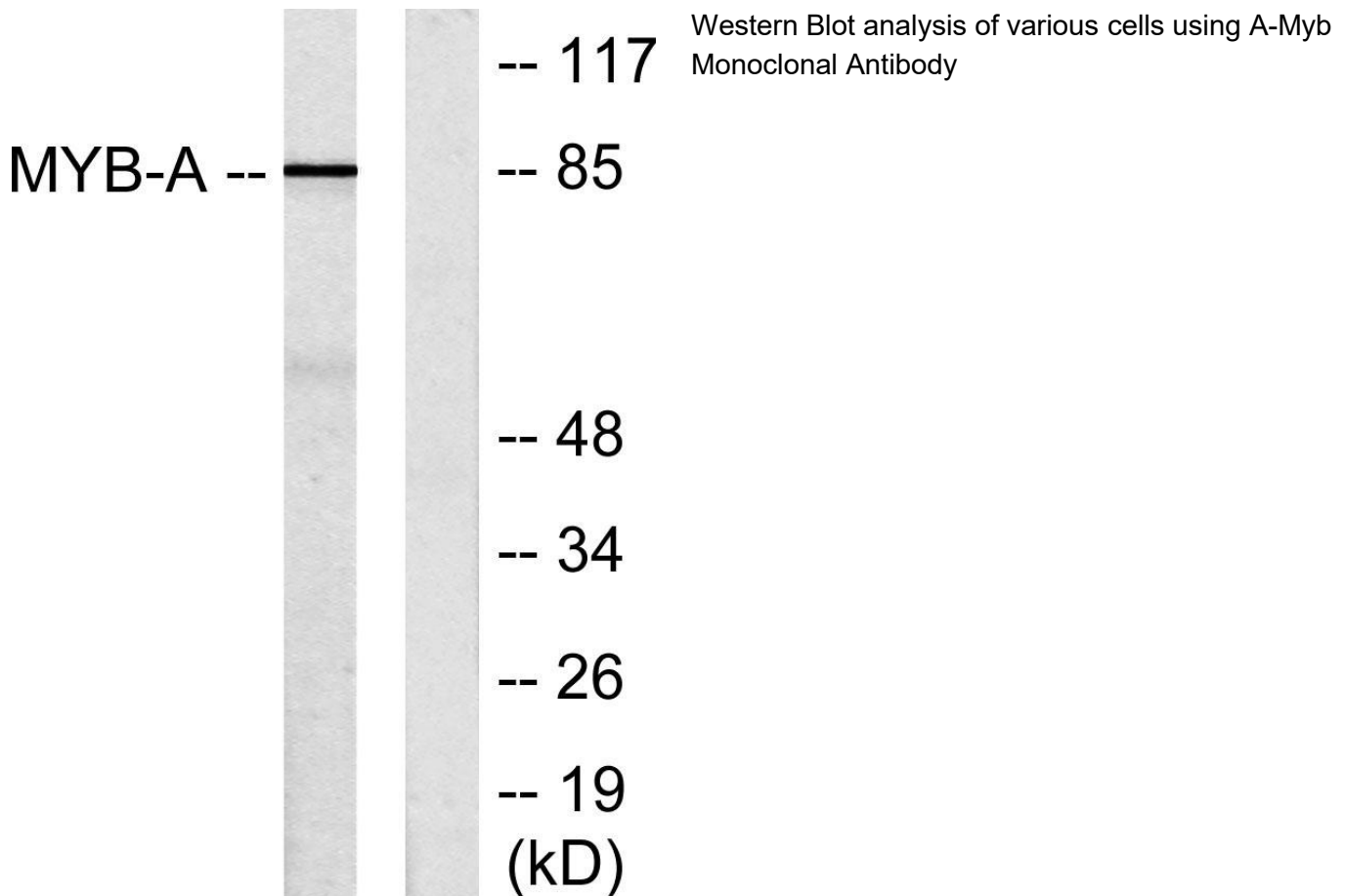
## matters needing attention

Avoid repeated freezing and thawing!

## Usage suggestions

This product can be used in immunological reaction related experiments. For more information, please consult technical personnel.

## Products Images



Nanjing BYabscience technology Co.,Ltd