



FRA1 (phospho-Ser265) mouse mAb

Catalog No	BYmab-01449
Isotype	IgG
Reactivity	Human;Mouse;Rat
Applications	WB
Gene Name	FOSL1 FRA1
Protein Name	FRA1 (Ser265)
Immunogen	Synthesized phosho peptide around human FRA1 (Ser265)
Specificity	This antibody detects endogenous levels of Human Mouse Rat FRA1 (phospho-Ser265)
Formulation	Liquid in PBS containing 50% glycerol, 0.5% BSA and 0.02% sodium azide.
Source	Monoclonal, Mouse,IgG
Purification	The antibody was affinity-purified from mouse antiserum by affinity-chromatography using epitope-specific immunogen.
Dilution	WB 1:500-2000
Concentration	1 mg/ml
Purity	≥90%
Storage Stability	-20°C/1 year
Synonyms	Fos-related antigen 1 (FRA-1)
Observed Band	43kD
Cell Pathway	Nucleus .
Tissue Specificity	Blood,Endothelial cell,Kidney,Skin,
Function	similarity:Belongs to the bZIP family.,similarity:Belongs to the bZIP family. Fos subfamily.,similarity:Contains 1 bZIP domain.,subunit:Heterodimer.,
Background	The Fos gene family consists of 4 members: FOS, FOSB, FOSL1, and FOSL2. These genes encode leucine zipper proteins that can dimerize with proteins of the JUN family, thereby forming the transcription factor complex AP-1. As such, the FOS proteins have been implicated as regulators of cell proliferation, differentiation, and transformation. Several transcript variants encoding different isoforms have been found for this gene. [provided by RefSeq, Jul 2014],
matters needing attention	Avoid repeated freezing and thawing!

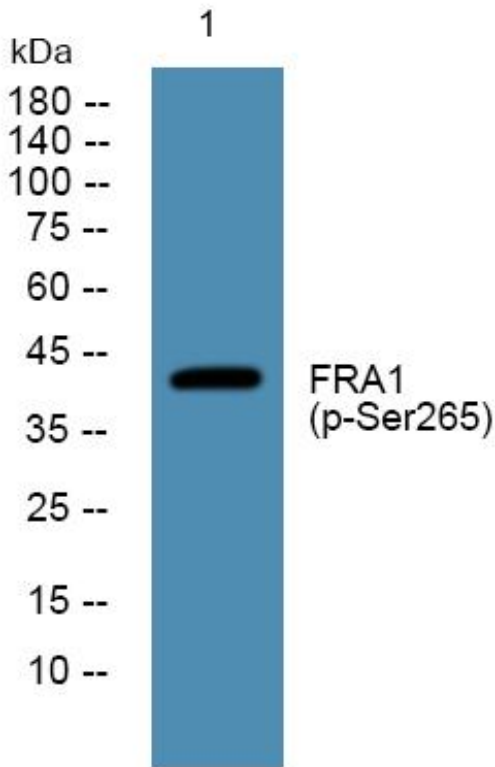
Nanjing BYabscience technology Co.,Ltd



Usage suggestions

This product can be used in immunological reaction related experiments. For more information, please consult technical personnel.

Products Images



Western Blot analysis of various cells using FRA1 (phospho-Ser265) mouse mAb

Nanjing BYabs science technology Co.,Ltd

网址: www.njbybio.com

官方热线: 025-5229-8998

监督电话: 15950492658