



Fos B (phospho Ser27) Monoclonal Antibody

Catalog No	BYmab-01433
Isotype	IgG
Reactivity	Human;Mouse
Applications	WB
Gene Name	FOSB
Protein Name	Protein fosB
Immunogen	The antiserum was produced against synthesized peptide derived from human FosB around the phosphorylation site of Ser27. AA range:12-61
Specificity	Phospho-Fos B (S27) Monoclonal Antibody detects endogenous levels of Fos B protein only when phosphorylated at S27.
Formulation	Liquid in PBS containing 50% glycerol, 0.5% BSA and 0.02% sodium azide.
Source	Monoclonal, Mouse,IgG
Purification	The antibody was affinity-purified from mouse antiserum by affinity-chromatography using epitope-specific immunogen.
Dilution	WB 1:500-2000
Concentration	1 mg/ml
Purity	≥90%
Storage Stability	-20°C/1 year
Synonyms	FOSB; G0S3; Protein fosB; G0/G1 switch regulatory protein 3
Observed Band	35kD
Cell Pathway	Nucleus .
Tissue Specificity	[Isoform 11]: Expressed in the nucleus accumbens of the striatum (at protein level).
Function	function:FosB interacts with Jun proteins enhancing their DNA binding activity.,similarity:Belongs to the bZIP family.,similarity:Belongs to the bZIP family. Fos subfamily.,similarity:Contains 1 bZIP domain.,subunit:Heterodimer.,
Background	The Fos gene family consists of 4 members: FOS, FOSB, FOSL1, and FOSL2. These genes encode leucine zipper proteins that can dimerize with proteins of the JUN family, thereby forming the transcription factor complex AP-1. As such, the FOS proteins have been implicated as regulators of cell proliferation, differentiation, and transformation. Alternatively spliced transcript variants encoding different isoforms have been found for this gene. [provided by RefSeq, Jul 2008],

Nanjing BYabscience technology Co.,Ltd



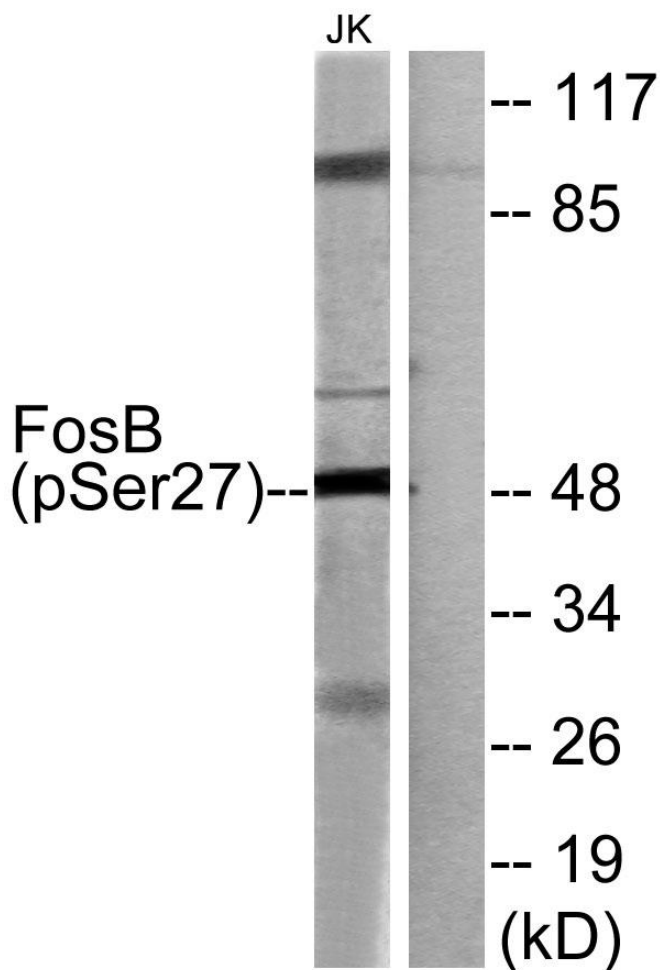
matters needing attention

Avoid repeated freezing and thawing!

Usage suggestions

This product can be used in immunological reaction related experiments. For more information, please consult technical personnel.

Products Images



Western Blot analysis of various cells using Fos B (phospho Ser27) Monoclonal Antibody