



# Topo II $\alpha$ (phospho Thr1343) Monoclonal Antibody

<b>Catalog No</b>	BYmab-01322
<b>Isotype</b>	IgG
<b>Reactivity</b>	Human;Rat;Mouse;
<b>Applications</b>	WB
<b>Gene Name</b>	TOP2A
<b>Protein Name</b>	DNA topoisomerase 2-alpha
<b>Immunogen</b>	The antiserum was produced against synthesized peptide derived from human TOP2A around the phosphorylation site of Thr1343. AA range:1311-1360
<b>Specificity</b>	Phospho-Topo II $\alpha$ (T1343) Monoclonal Antibody detects endogenous levels of Topo II $\alpha$ protein only when phosphorylated at T1343.
<b>Formulation</b>	Liquid in PBS containing 50% glycerol, 0.5% BSA and 0.02% sodium azide.
<b>Source</b>	Monoclonal, Mouse,IgG
<b>Purification</b>	The antibody was affinity-purified from mouse antiserum by affinity-chromatography using epitope-specific immunogen.
<b>Dilution</b>	WB 1:500-2000
<b>Concentration</b>	1 mg/ml
<b>Purity</b>	$\geq 90\%$
<b>Storage Stability</b>	-20°C/1 year
<b>Synonyms</b>	TOP2A; TOP2; DNA topoisomerase 2-alpha; DNA topoisomerase II; $\alpha$ isozyme
<b>Observed Band</b>	190kD
<b>Cell Pathway</b>	Cytoplasm . Nucleus, nucleoplasm . Nucleus . Nucleus, nucleolus .
<b>Tissue Specificity</b>	Expressed in the tonsil, spleen, lymph node, thymus, skin, pancreas, testis, colon, kidney, liver, brain and lung (PubMed:9155056). Also found in high-grade lymphomas, squamous cell lung tumors and seminomas (PubMed:9155056).
<b>Function</b>	catalytic activity:ATP-dependent breakage, passage and rejoining of double-stranded DNA.,enzyme regulation:Specifically inhibited by the intercalating agent amsacrine.,function:Control of topological states of DNA by transient breakage and subsequent rejoining of DNA strands. Topoisomerase II makes double-strand breaks.,miscellaneous:Eukaryotic topoisomerase I and II can relax both negative and positive supercoils, whereas prokaryotic enzymes relax only negative supercoils.,PTM:Phosphorylation has no effect on catalytic activity.,similarity:Belongs to the type II topoisomerase family.,subcellular location:Generally located in the nucleoplasm.,subunit:Homodimer. Interacts with

**Nanjing BYabscience technology Co.,Ltd**



COPS5.,

## Background

This gene encodes a DNA topoisomerase, an enzyme that controls and alters the topologic states of DNA during transcription. This nuclear enzyme is involved in processes such as chromosome condensation, chromatid separation, and the relief of torsional stress that occurs during DNA transcription and replication. It catalyzes the transient breaking and rejoining of two strands of duplex DNA which allows the strands to pass through one another, thus altering the topology of DNA. Two forms of this enzyme exist as likely products of a gene duplication event. The gene encoding this form, alpha, is localized to chromosome 17 and the beta gene is localized to chromosome 3. The gene encoding this enzyme functions as the target for several anticancer agents and a variety of mutations in this gene have been associated with the development of drug resistance. Reduced activity of this enzyme may also pla

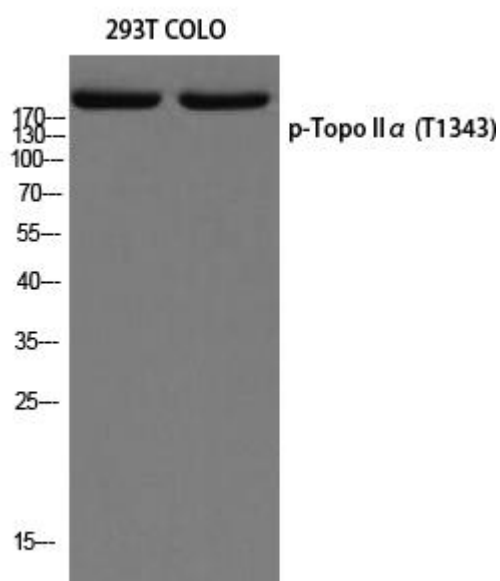
## matters needing attention

Avoid repeated freezing and thawing!

## Usage suggestions

This product can be used in immunological reaction related experiments. For more information, please consult technical personnel.

## Products Images



Western Blot analysis of various cells using Topo II  $\alpha$  (phospho Thr1343) Monoclonal Antibody

Nanjing BYabscience technology Co.,Ltd