



Stat6 (phospho Tyr641) Monoclonal Antibody

Catalog No	BYmab-01285
Isotype	IgG
Reactivity	Human;Mouse;Rat
Applications	WB
Gene Name	STAT6
Protein Name	Signal transducer and activator of transcription 6
Immunogen	The antiserum was produced against synthesized peptide derived from human STAT6 around the phosphorylation site of Tyr641. AA range:608-657
Specificity	Phospho-Stat6 (Y641) Monoclonal Antibody detects endogenous levels of Stat6 protein only when phosphorylated at Y641.
Formulation	Liquid in PBS containing 50% glycerol, 0.5% BSA and 0.02% sodium azide.
Source	Monoclonal, Mouse,IgG
Purification	The antibody was affinity-purified from mouse antiserum by affinity-chromatography using epitope-specific immunogen.
Dilution	WB 1:500-2000
Concentration	1 mg/ml
Purity	≥90%
Storage Stability	-20°C/1 year
Synonyms	STAT6; Signal transducer and activator of transcription 6; IL-4 Stat
Observed Band	94kD
Cell Pathway	Cytoplasm. Nucleus. Translocated into the nucleus in response to phosphorylation.
Tissue Specificity	Uterus,
Function	function:Carries out a dual function: signal transduction and activation of transcription. Involved in interleukin-4 signalling.,PTM:Tyrosine phosphorylated following stimulation by IL-4 and IL-3.,similarity:Belongs to the transcription factor STAT family.,similarity:Contains 1 SH2 domain.,subcellular location:Translocated into the nucleus in response to phosphorylation.,subunit:Forms a homodimer or a heterodimer with a related family member (By similarity). Interacts with NCOA1 via its C-terminal LXXLL motif.,
Background	The protein encoded by this gene is a member of the STAT family of transcription factors. In response to cytokines and growth factors, STAT family members are phosphorylated by the receptor associated kinases, and then form homo- or

Nanjing BYabscience technology Co.,Ltd



heterodimers that translocate to the cell nucleus where they act as transcription activators. This protein plays a central role in exerting IL4 mediated biological responses. It is found to induce the expression of BCL2L1/BCL-X(L), which is responsible for the anti-apoptotic activity of IL4. Knockout studies in mice suggested the roles of this gene in differentiation of T helper 2 (Th2) cells, expression of cell surface markers, and class switch of immunoglobulins. Alternative splicing results in multiple transcript variants.[provided by RefSeq, May 2010],

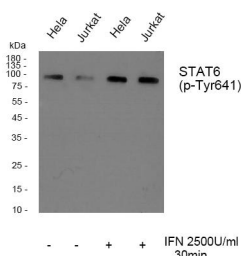
matters needing attention

Avoid repeated freezing and thawing!

Usage suggestions

This product can be used in immunological reaction related experiments. For more information, please consult technical personnel.

Products Images



Western Blot analysis of various cells using Stat6 (phospho Tyr641) Monoclonal Antibody