



Kv10.2 Monoclonal Antibody

| | |
|--------------------|---|
| Catalog No | BYmab-01198 |
| Isotype | IgG |
| Reactivity | Human;Rat;Mouse |
| Applications | WB |
| Gene Name | KCNH5 |
| Protein Name | Potassium voltage-gated channel subfamily H member 5 (Ether-a-go-go potassium channel 2) (hEAG2) (Voltage-gated potassium channel subunit Kv10.2) |
| Immunogen | Synthetic Peptide of Kv10.2 AA range: 264-314 |
| Specificity | Kv10.2 protein(A260) detects endogenous levels of Kv10.2 |
| Formulation | Liquid in PBS containing 50% glycerol, 0.5% BSA and 0.02% sodium azide. |
| Source | Monoclonal, Mouse,IgG |
| Purification | The antibody was affinity-purified from mouse antiserum by affinity-chromatography using epitope-specific immunogen. |
| Dilution | WB 1:500-2000 |
| Concentration | 1 mg/ml |
| Purity | ≥90% |
| Storage Stability | -20°C/1 year |
| Synonyms | Potassium voltage-gated channel subfamily H member 5 (Ether-a-go-go potassium channel 2;hEAG2;Voltage-gated potassium channel subunit Kv10.2) |
| Observed Band | 60kD |
| Cell Pathway | Membrane; Multi-pass membrane protein. |
| Tissue Specificity | Detected in brain, skeletal muscle, heart, placenta, lung and liver, and at low levels in kidney. |
| Function | alternative products:Experimental confirmation may be lacking for some isoforms,domain:The segment S4 is probably the voltage-sensor and is characterized by a series of positively charged amino acids at every third position.,function:Pore-forming (alpha) subunit of voltage-gated potassium channel. Elicits a non-inactivating outward rectifying current. Channel properties may be modulated by cAMP and subunit assembly.,sequence caution:Translated as Gly.,similarity:Belongs to the potassium channel family. H (Eag) subfamily.,similarity:Contains 1 cyclic nucleotide-binding domain.,similarity:Contains 1 PAC (PAS-associated C-terminal) domain.,similarity:Contains 1 PAS (PER-ARNT-SIM) domain.,subunit:The |

Nanjing BYabscience technology Co.,Ltd



potassium channel is probably composed of a homo- or heterotetrameric complex of pore-forming alpha subunits that can associate with modulating beta subunits. Heteromultimer with KCNH1/EAG.,tiss

Background

This gene encodes a member of voltage-gated potassium channels. Members of this family have diverse functions, including regulating neurotransmitter and hormone release, cardiac function, and cell volume. This protein is an outward-rectifying, noninactivating channel. Alternative splicing results in multiple transcript variants. [provided by RefSeq, Jul 2013],

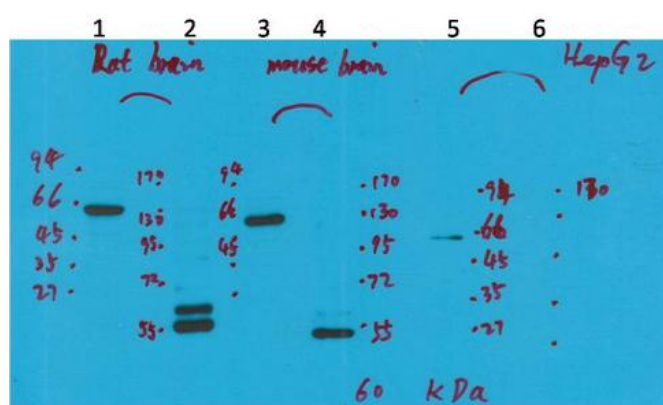
matters needing attention

Avoid repeated freezing and thawing!

Usage suggestions

This product can be used in immunological reaction related experiments. For more information, please consult technical personnel.

Products Images



Western Blot analysis of various cells using Kv10.2 Monoclonal Antibody