



# Histone H2B (Acetyl Lys15) Monoclonal Antibody

<b>Catalog No</b>	BYmab-00833
<b>Isotype</b>	IgG
<b>Reactivity</b>	Human;Mouse
<b>Applications</b>	WB
<b>Gene Name</b>	H2BFS
<b>Protein Name</b>	Histone H2B type F-S
<b>Immunogen</b>	The antiserum was produced against synthesized peptide derived from human Histone H2B around the acetylated site of Lys15. AA range:1-50
<b>Specificity</b>	Acetyl-Histone H2B (K15) Monoclonal Antibody detects endogenous levels of Histone H2B protein only when acetylated at K15.
<b>Formulation</b>	Liquid in PBS containing 50% glycerol, 0.5% BSA and 0.02% sodium azide.
<b>Source</b>	Monoclonal, Mouse,IgG
<b>Purification</b>	The antibody was affinity-purified from mouse antiserum by affinity-chromatography using epitope-specific immunogen.
<b>Dilution</b>	WB 1:500-2000
<b>Concentration</b>	1 mg/ml
<b>Purity</b>	≥90%
<b>Storage Stability</b>	-20°C/1 year
<b>Synonyms</b>	H2BFS; Histone H2B type F-S; Histone H2B.s; H2B/s;H2BK15AC
<b>Observed Band</b>	20kD
<b>Cell Pathway</b>	Nucleus. Chromosome.
<b>Tissue Specificity</b>	
<b>Function</b>	DNA packaging, chromatin organization, chromatin assembly or disassembly, nucleosome assembly, defense response, response to bacterium, chromatin assembly, cellular macromolecular complex subunit organization, cellular macromolecular complex assembly, nucleosome organization, defense response to bacterium, macromolecular complex subunit organization, chromosome organization, macromolecular complex assembly, protein-DNA complex assembly,
<b>Background</b>	H2BFS (H2B Histone Family Member S (Pseudogene)) is a Pseudogene. Diseases associated with H2BFS include endometrial stromal sarcoma. Among its related pathways are Packaging Of Telomere Ends. GO annotations related to

**Nanjing BYabscience technology Co.,Ltd**



this gene include sequence-specific DNA binding and protein heterodimerization activity. An important paralog of this gene is HIST1H2BH.

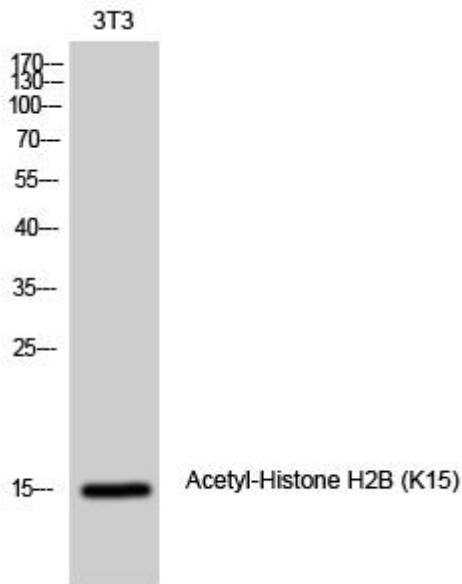
**matters needing attention**

Avoid repeated freezing and thawing!

**Usage suggestions**

This product can be used in immunological reaction related experiments. For more information, please consult technical personnel.

## Products Images



Western Blot analysis of various cells using Histone H2B (Acetyl Lys15) Monoclonal Antibody