



# CRBP II Monoclonal Antibody

<b>Catalog No</b>	BYmab-00768
<b>Isotype</b>	IgG
<b>Reactivity</b>	Human;Mouse;Rat
<b>Applications</b>	WB
<b>Gene Name</b>	RBP2
<b>Protein Name</b>	Retinol-binding protein 2
<b>Immunogen</b>	The antiserum was produced against synthesized peptide derived from the Internal region of human RBP2. AA range:71-120
<b>Specificity</b>	CRBP II Monoclonal Antibody detects endogenous levels of CRBP II protein.
<b>Formulation</b>	Liquid in PBS containing 50% glycerol, 0.5% BSA and 0.02% sodium azide.
<b>Source</b>	Monoclonal, Mouse,IgG
<b>Purification</b>	The antibody was affinity-purified from mouse antiserum by affinity-chromatography using epitope-specific immunogen.
<b>Dilution</b>	WB 1:500-2000
<b>Concentration</b>	1 mg/ml
<b>Purity</b>	≥90%
<b>Storage Stability</b>	-20°C/1 year
<b>Synonyms</b>	RBP2; CRBP2; Retinol-binding protein 2; Cellular retinol-binding protein II; CRBP-II
<b>Observed Band</b>	15kD
<b>Cell Pathway</b>	Cytoplasm.
<b>Tissue Specificity</b>	Higher expression in adult small intestine and to a much lesser extent in fetal kidney.
<b>Function</b>	domain:Forms a beta-barrel structure that accommodates hydrophobic ligands in its interior.,function:Intracellular transport of retinol.,similarity:Belongs to the calycin superfamily. Fatty-acid binding protein (FABP) family.,tissue specificity:Higher expression in adult small intestine and to a much lesser extent in fetal kidney.,
<b>Background</b>	retinol binding protein 2(RBP2) Homo sapiens This gene encodes an abundant protein present in the small intestinal epithelium. It is thought to participate in the uptake and/or intracellular metabolism of vitamin A. Vitamin A is a fat-soluble vitamin necessary for growth, reproduction, differentiation of

**Nanjing BYabscience technology Co.,Ltd**



epithelial tissues, and vision. This protein may also modulate the supply of retinoic acid to the nuclei of endometrial cells during the menstrual cycle. [provided by RefSeq, Aug 2015],

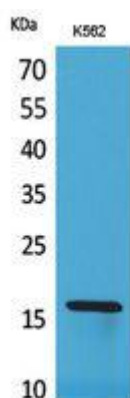
**matters needing attention**

Avoid repeated freezing and thawing!

**Usage suggestions**

This product can be used in immunological reaction related experiments. For more information, please consult technical personnel.

## Products Images



Western Blot analysis of various cells using CRBP II Monoclonal Antibody