



# SNX1 Monoclonal Antibody

<b>Catalog No</b>	BYmab-00732
<b>Isotype</b>	IgG
<b>Reactivity</b>	Human;Mouse;Rat
<b>Applications</b>	WB
<b>Gene Name</b>	SNX1
<b>Protein Name</b>	Sorting nexin-1
<b>Immunogen</b>	Synthesized peptide derived from the Internal region of human SNX1.
<b>Specificity</b>	SNX1 Monoclonal Antibody detects endogenous levels of SNX1 protein.
<b>Formulation</b>	Liquid in PBS containing 50% glycerol, 0.5% BSA and 0.02% sodium azide.
<b>Source</b>	Monoclonal, Mouse,IgG
<b>Purification</b>	The antibody was affinity-purified from mouse antiserum by affinity-chromatography using epitope-specific immunogen.
<b>Dilution</b>	WB 1:500-2000
<b>Concentration</b>	1 mg/ml
<b>Purity</b>	≥90%
<b>Storage Stability</b>	-20°C/1 year
<b>Synonyms</b>	SNX1; Sorting nexin-1
<b>Observed Band</b>	60kD
<b>Cell Pathway</b>	Endosome membrane ; Peripheral membrane protein; Cytoplasmic side. Golgi apparatus, trans-Golgi network membrane ; Peripheral membrane protein ; Cytoplasmic side . Early endosome membrane; Peripheral membrane protein; Cytoplasmic side. Cell projection, lamellipodium . Enriched on tubular elements of the early endosome membrane. Binds preferentially to highly curved membranes enriched in phosphatidylinositol 3-phosphate (PtdIns(3P)) or phosphatidylinositol 3,5-bisphosphate (PtdIns(3,5)P2) (PubMed:15498486). Colocalized with SORT1 to tubular endosomal membrane structures called endosome-to-TGN transport carriers (ETCs) which are budding from early endosome vacuoles just before maturing into late endosome vacuoles (PubMed:18088323). Colocalizes with DNAJC13 and Shigella dysenteria toxin stx
<b>Tissue Specificity</b>	Brain,Coronary artery,Liver,Muscle,Testis,
<b>Function</b>	function:May be involved in several stages of intracellular trafficking. Plays a role in targeting ligand-activated EGFR to the lysosomes for degradation after endocytosis from the cell surface and release from the Golgi. Component of the

**Nanjing BYabscience technology Co.,Ltd**



retromer complex, a complex required to retrieve lysosomal enzyme receptors (IGF2R and M6PR) from endosomes to the trans-Golgi network. Interacts with PtdIns(3,4,5)P3 and, with weaker affinity, with PtdIns(3,5)P2.,similarity:Belongs to the sorting nexin family.,similarity:Contains 1 PX (phox homology) domain.,subunit:Self-assembles into a complex of approximately 300 kDa (By similarity). Interacts with HGS (By similarity). Component of the retromer complex composed of VPS26 (VPS26A or VPS26B), VPS29, VPS35, SNX1 and SNX2.,

#### Background

This gene encodes a member of the sorting nexin family. Members of this family contain a phox (PX) domain, which is a phosphoinositide binding domain, and are involved in intracellular trafficking. This endosomal protein regulates the cell-surface expression of epidermal growth factor receptor. This protein also has a role in sorting protease-activated receptor-1 from early endosomes to lysosomes. This protein may form oligomeric complexes with family members. This gene results in three transcript variants encoding distinct isoforms. [provided by RefSeq, Jul 2008],

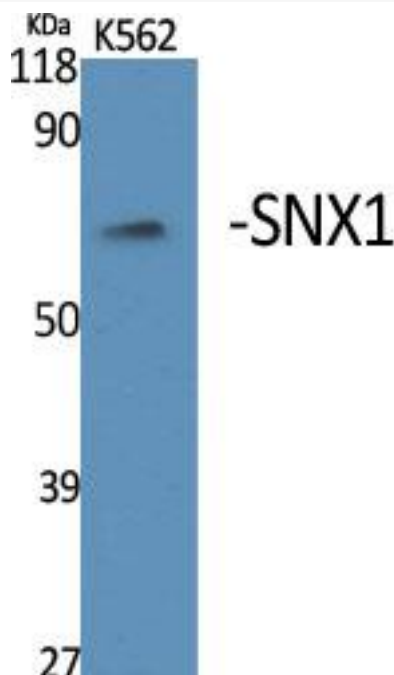
#### matters needing attention

Avoid repeated freezing and thawing!

#### Usage suggestions

This product can be used in immunological reaction related experiments. For more information, please consult technical personnel.

### Products Images



Western Blot analysis of various cells using SNX1 Monoclonal Antibody

**Nanjing BYabscience technology Co.,Ltd**