



SNAP 25 Monoclonal Antibody

Catalog No	BYmab-00730
Isotype	IgG
Reactivity	Human;Mouse;Rat
Applications	WB
Gene Name	SNAP-25
Protein Name	Synaptosomal-associated protein 25
Immunogen	The antiserum was produced against synthesized peptide derived from human SNAP25. AA range:151-200
Specificity	SNAP 25 Monoclonal Antibody detects endogenous levels of SNAP 25 protein.
Formulation	Liquid in PBS containing 50% glycerol, 0.5% BSA and 0.02% sodium azide.
Source	Monoclonal, Mouse,IgG
Purification	The antibody was affinity-purified from mouse antiserum by affinity-chromatography using epitope-specific immunogen.
Dilution	WB 1:500-2000
Concentration	1 mg/ml
Purity	≥90%
Storage Stability	-20°C/1 year
Synonyms	SNAP25; SNAP; Synaptosomal-associated protein 25; SNAP-25; Super protein; SUP; Synaptosomal-associated 25 kDa protein
Observed Band	25kD
Cell Pathway	Cytoplasm, perinuclear region . Cell membrane ; Lipid-anchor . Cell junction, synapse, synaptosome . Photoreceptor inner segment . Membrane association requires palmitoylation. Expressed throughout cytoplasm, concentrating at the perinuclear region. Colocalizes with KCNB1 at the cell membrane (By similarity). Colocalizes with PLCL1 at the cell membrane (By similarity). .
Tissue Specificity	Neurons of the neocortex, hippocampus, piriform cortex, anterior thalamic nuclei, pontine nuclei, and granule cells of the cerebellum.
Function	alternative products:Isoforms differ by the usage of two alternative homologous exons (5a and 5b) which encode for positions 56 to 94 and differ only in 9 positions out of 39,function:t-SNARE involved in the molecular regulation of neurotransmitter release. May play an important role in the synaptic function of specific neuronal systems. Associates with proteins involved in vesicle docking and membrane fusion. Regulates plasma membrane recycling through its interaction with CENPF.,miscellaneous:When cloned and expressed in Eschericia

Nanjing BYabscience technology Co.,Ltd



coli, where protein palmitoylation does not occur, Cys-85, Cys-88, Cys-90 and Cys-92 in the protein sequence readily form an iron-sulfur cluster instead.,PTM:Palmitoylated. Cys-85 appears to be the main site, and palmitoylation is required for membrane association.,similarity:Belongs to the SNAP-25 family.,similarity:Contains 2 t-SNARE coiled-coil homology d

Background

Synaptic vesicle membrane docking and fusion is mediated by SNAREs (soluble N-ethylmaleimide-sensitive factor attachment protein receptors) located on the vesicle membrane (v-SNAREs) and the target membrane (t-SNAREs). The assembled v-SNARE/t-SNARE complex consists of a bundle of four helices, one of which is supplied by v-SNARE and the other three by t-SNARE. For t-SNAREs on the plasma membrane, the protein syntaxin supplies one helix and the protein encoded by this gene contributes the other two. Therefore, this gene product is a presynaptic plasma membrane protein involved in the regulation of neurotransmitter release. Two alternative transcript variants encoding different protein isoforms have been described for this gene. [provided by RefSeq, Jul 2008],

matters needing attention

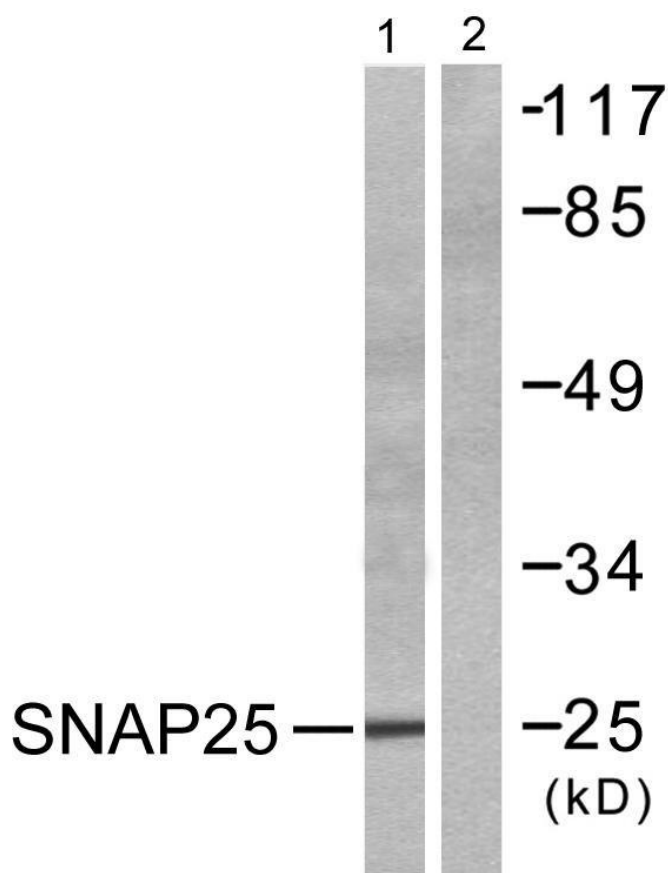
Avoid repeated freezing and thawing!

Usage suggestions

This product can be used in immunological reaction related experiments. For more information, please consult technical personnel.

Products Images

Western Blot analysis of various cells using SNAP 25 Monoclonal Antibody



Nanjing BYabs science technology Co.,Ltd