



SMVT Monoclonal Antibody

Catalog No	BYmab-00729
Isotype	IgG
Reactivity	Human;Rat;Mouse;
Applications	WB
Gene Name	SLC5A6
Protein Name	Sodium-dependent multivitamin transporter
Immunogen	The antiserum was produced against synthesized peptide derived from human SLC5A6. AA range:551-600
Specificity	SMVT Monoclonal Antibody detects endogenous levels of SMVT protein.
Formulation	Liquid in PBS containing 50% glycerol, 0.5% BSA and 0.02% sodium azide.
Source	Monoclonal, Mouse,IgG
Purification	The antibody was affinity-purified from mouse antiserum by affinity-chromatography using epitope-specific immunogen.
Dilution	WB 1:500-2000
Concentration	1 mg/ml
Purity	≥90%
Storage Stability	-20°C/1 year
Synonyms	SLC5A6; SMVT; Sodium-dependent multivitamin transporter; Na(+)-dependent multivitamin transporter; Solute carrier family 5 member 6
Observed Band	68kD
Cell Pathway	Cell membrane ; Multi-pass membrane protein .; Cell membrane ; Multi-pass membrane protein . (Microbial infection) Exposure to E.coli lipopolysaccharides leads to reduced cell membrane localization. .
Tissue Specificity	Expressed in microvessels of the brain (at protein level) (PubMed:25809983). Expressed in heart, brain, placenta, lung, liver, skeletal muscle, kidney, and pancreas (PubMed:10329687).
Function	function:Transports pantothenate, biotin and lipoate in the presence of sodium.,similarity:Belongs to the sodium:solute symporter (SSF) (TC 2.A.21) family.,
Background	function:Transports pantothenate, biotin and lipoate in the presence of sodium.,similarity:Belongs to the sodium:solute symporter (SSF) (TC 2.A.21) family.,

Nanjing BYabscience technology Co.,Ltd



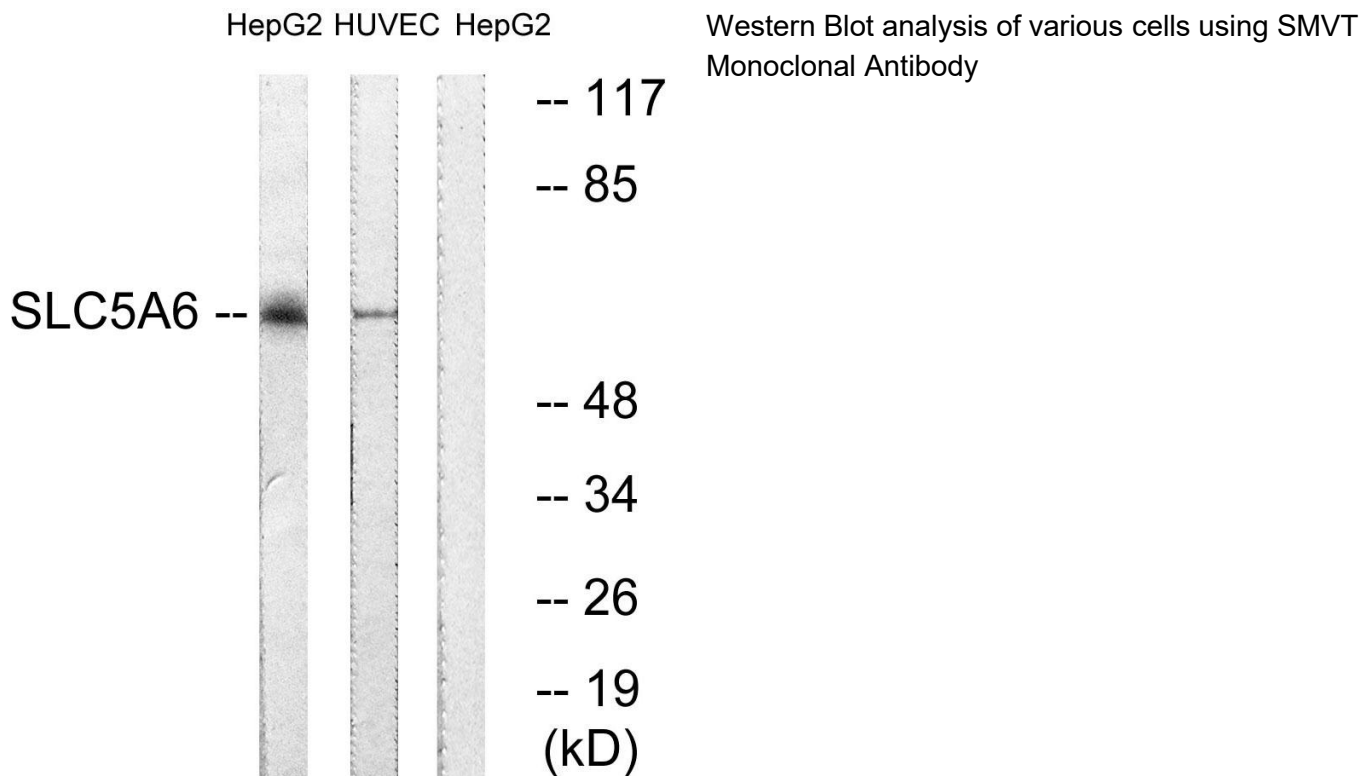
matters needing attention

Avoid repeated freezing and thawing!

Usage suggestions

This product can be used in immunological reaction related experiments. For more information, please consult technical personnel.

Products Images



Nanjing BYabs science technology Co.,Ltd

网址: www.njbybio.com

官方热线: 025-5229-8998

监督电话: 15950492658