



# SLC17A2 Monoclonal Antibody

<b>Catalog No</b>	BYmab-00727
<b>Isotype</b>	IgG
<b>Reactivity</b>	Human;Mouse
<b>Applications</b>	WB
<b>Gene Name</b>	SLC17A2
<b>Protein Name</b>	Sodium-dependent phosphate transport protein 3
<b>Immunogen</b>	The antiserum was produced against synthesized peptide derived from human SLC17A2. AA range:213-262
<b>Specificity</b>	SLC17A2 Monoclonal Antibody detects endogenous levels of SLC17A2 protein.
<b>Formulation</b>	Liquid in PBS containing 50% glycerol, 0.5% BSA and 0.02% sodium azide.
<b>Source</b>	Monoclonal, Mouse,IgG
<b>Purification</b>	The antibody was affinity-purified from mouse antiserum by affinity-chromatography using epitope-specific immunogen.
<b>Dilution</b>	WB 1:500-2000
<b>Concentration</b>	1 mg/ml
<b>Purity</b>	≥90%
<b>Storage Stability</b>	-20°C/1 year
<b>Synonyms</b>	SLC17A2; NPT3; Sodium-dependent phosphate transport protein 3; Na(+)/PI cotransporter 3; Sodium/phosphate cotransporter 3; Solute carrier family 17 member 2
<b>Observed Band</b>	47kD
<b>Cell Pathway</b>	Membrane; Multi-pass membrane protein.
<b>Tissue Specificity</b>	Expressed in the small intestine, kidney, spleen and testis. Not detected in fetal brain, bone marrow, and mammary gland.
<b>Function</b>	function:May be involved in actively transporting phosphate into cells via Na(+) cotransport.,similarity:Belongs to the major facilitator superfamily. Sodium/anion cotransporter family.,tissue specificity:Expressed in the small intestine, kidney, spleen and testis. Not detected in fetal brain, bone marrow, and mammary gland.,
<b>Background</b>	function:May be involved in actively transporting phosphate into cells via Na(+) cotransport.,similarity:Belongs to the major facilitator superfamily. Sodium/anion cotransporter family.,tissue specificity:Expressed in the small intestine, kidney, spleen and testis. Not detected in fetal brain, bone marrow, and mammary gland.,

**Nanjing BYabscience technology Co.,Ltd**



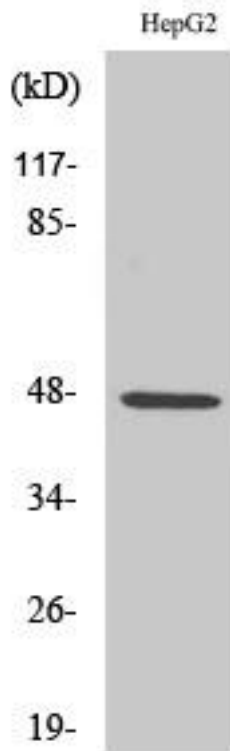
**matters needing attention**

Avoid repeated freezing and thawing!

**Usage suggestions**

This product can be used in immunological reaction related experiments. For more information, please consult technical personnel.

## Products Images



Western Blot analysis of various cells using SLC17A2 Monoclonal Antibody

Nanjing BYabs science technology Co.,Ltd

网址: [www.njbybio.com](http://www.njbybio.com)

官方热线: 025-5229-8998

监督电话: 15950492658