



# Nup160 Monoclonal Antibody

Catalog No	BYmab-00709
Isotype	IgG
Reactivity	Human;Mouse
Applications	WB
Gene Name	NUP160
Protein Name	Nuclear pore complex protein Nup160
Immunogen	The antiserum was produced against synthesized peptide derived from human NUP160. AA range:392-441
Specificity	Nup160 Monoclonal Antibody detects endogenous levels of Nup160 protein.
Formulation	Liquid in PBS containing 50% glycerol, 0.5% BSA and 0.02% sodium azide.
Source	Monoclonal, Mouse,IgG
Purification	The antibody was affinity-purified from mouse antiserum by affinity-chromatography using epitope-specific immunogen.
Dilution	WB 1:500-2000
Concentration	1 mg/ml
Purity	≥90%
Storage Stability	-20°C/1 year
Synonyms	NUP160; KIAA0197; NUP120; Nuclear pore complex protein Nup160; 160 kDa nucleoporin; Nucleoporin Nup160
Observed Band	140kD
Cell Pathway	Nucleus, nuclear pore complex .
Tissue Specificity	Bone marrow,Epithelium,Muscle,Skin,Small intestine,Testis,Trachea,
Function	caution:It is uncertain whether Met-1 or Met-35 is the initiator.,function:Involved in poly(A)+ RNA transport.,sequence caution:Probable cloning artifact. Aberrant splice sites.,subunit:Forms part of the Nup160 subcomplex in the nuclear pore which is composed of Nup160, Nup133, Nup107 and Nup96. This complex plays a role in RNA export and in tethering Nup98 and Nup153 to the nucleus.,
Background	nucleoporin 160(NUP160) Homo sapiens NUP160 is 1 of up to 60 proteins that make up the 120-MD nuclear pore complex, which mediates nucleoplasmic transport.[supplied by OMIM, Apr 2004],

Nanjing BYabscience technology Co.,Ltd

网址: [www.njbybio.com](http://www.njbybio.com)

官方热线: 025-5229-8998

监督电话: 15950492658



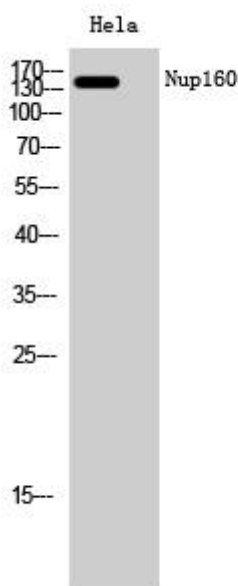
**matters needing attention**

Avoid repeated freezing and thawing!

**Usage suggestions**

This product can be used in immunological reaction related experiments. For more information, please consult technical personnel.

## Products Images



Western Blot analysis of various cells using Nup160 Monoclonal Antibody