



# MxB Monoclonal Antibody

<b>Catalog No</b>	BYmab-00705
<b>Isotype</b>	IgG
<b>Reactivity</b>	Human;Rat;Mouse;
<b>Applications</b>	WB
<b>Gene Name</b>	MX2
<b>Protein Name</b>	Interferon-induced GTP-binding protein Mx2
<b>Immunogen</b>	Synthesized peptide derived from the Internal region of human MxB.
<b>Specificity</b>	MxB Monoclonal Antibody detects endogenous levels of MxB protein.
<b>Formulation</b>	Liquid in PBS containing 50% glycerol, 0.5% BSA and 0.02% sodium azide.
<b>Source</b>	Monoclonal, Mouse,IgG
<b>Purification</b>	The antibody was affinity-purified from mouse antiserum by affinity-chromatography using epitope-specific immunogen.
<b>Dilution</b>	WB 1:500-2000
<b>Concentration</b>	1 mg/ml
<b>Purity</b>	≥90%
<b>Storage Stability</b>	-20°C/1 year
<b>Synonyms</b>	MX2; Interferon-induced GTP-binding protein Mx2; Interferon-regulated resistance GTP-binding protein MxB; Myxovirus resistance protein 2; p78-related protein
<b>Observed Band</b>	82kD
<b>Cell Pathway</b>	Cytoplasm . Nucleus . Nucleus, nuclear pore complex . Localization to nuclear pores requires GTP-binding.
<b>Tissue Specificity</b>	Brain,
<b>Function</b>	induction:By interferons.,similarity:Belongs to the dynamin family.,similarity:Contains 1 GED domain.,
<b>Background</b>	The protein encoded by this gene has a nuclear and a cytoplasmic form and is a member of both the dynamin family and the family of large GTPases. The nuclear form is localized in a granular pattern in the heterochromatin region beneath the nuclear envelope. A nuclear localization signal (NLS) is present at the amino terminal end of the nuclear form but is lacking in the cytoplasmic form due to use of an alternate translation start codon. This protein is upregulated by interferon-alpha but does not contain the antiviral activity of a similar myxovirus

**Nanjing BYabscience technology Co.,Ltd**



resistance protein 1. [provided by RefSeq, Jul 2008],

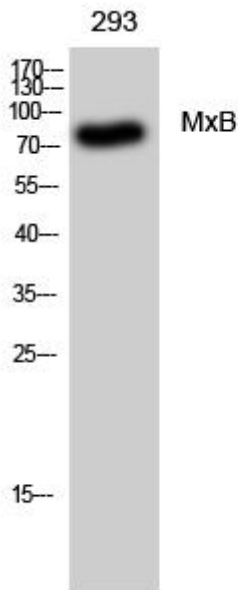
**matters needing attention**

Avoid repeated freezing and thawing!

**Usage suggestions**

This product can be used in immunological reaction related experiments. For more information, please consult technical personnel.

## Products Images



Western Blot analysis of various cells using MxB Monoclonal Antibody

Nanjing BYabscience technology Co.,Ltd

网址: [www.njbybio.com](http://www.njbybio.com)

官方热线: 025-5229-8998

监督电话: 15950492658