



GRASP55 Monoclonal Antibody

Catalog No	BYmab-00702
Isotype	IgG
Reactivity	Human;Mouse;Rat
Applications	WB
Gene Name	GORASP2
Protein Name	Golgi reassembly-stacking protein 2
Immunogen	The antiserum was produced against synthesized peptide derived from human GORASP2. AA range:181-230
Specificity	GRASP55 Monoclonal Antibody detects endogenous levels of GRASP55 protein.
Formulation	Liquid in PBS containing 50% glycerol, 0.5% BSA and 0.02% sodium azide.
Source	Monoclonal, Mouse,IgG
Purification	The antibody was affinity-purified from mouse antiserum by affinity-chromatography using epitope-specific immunogen.
Dilution	WB 1:500-2000
Concentration	1 mg/ml
Purity	≥90%
Storage Stability	-20°C/1 year
Synonyms	GORASP2; GOLPH6; Golgi reassembly-stacking protein 2; GRS2; Golgi phosphoprotein 6; GOLPH6; Golgi reassembly-stacking protein of 55 kDa; GRASP55; p59
Observed Band	47kD
Cell Pathway	Golgi apparatus membrane ; Lipid-anchor . Endoplasmic reticulum membrane . Golgi apparatus . Detected in the intermediate Golgi, membrane-associated (By similarity). ER stress triggers its relocalization from Golgi to ER membrane (PubMed:27062250, PubMed:28067262). .
Tissue Specificity	Epithelium,Testis,Uterus,
Function	function:May be involved in assembly and membrane stacking of the Golgi cisternae, and in the process by which Golgi stacks reform after mitotic breakdown. May regulate the intracellular transport and presentation of a defined set of transmembrane proteins, such as transmembrane Tgfa.,PTM:Myristoylated. Myristoylation is essential for the Golgi targeting.,PTM:Palmitoylated.,PTM:Phosphorylated in mitotic cells.,similarity:Belongs to the GORASP family.,similarity:Contains 1 PDZ (DHR)

Nanjing BYabscience technology Co.,Ltd



domain.,subunit:Forms a RAB2 effector complex with BLZF1/Golgin 45 in the medial Golgi. Interacts with members of the p24 cargo receptors. Interacts with CNIH and the cytoplasmic domain of transmembrane TGFA, prior its transit in the trans-Golgi. Does not interact with GM130.,

Background

This gene encodes a member of the Golgi reassembly stacking protein family. These proteins may play a role in the stacking of Golgi cisternae and Golgi ribbon formation, as well as Golgi fragmentation during apoptosis or mitosis. The encoded protein also plays a role in the intracellular transport of transforming growth factor alpha and may function as a molecular chaperone. A pseudogene of this gene is located on the short arm of chromosome 2. Alternatively spliced transcript variants encoding multiple isoforms have been observed for this gene. [provided by RefSeq, Jan 2011],

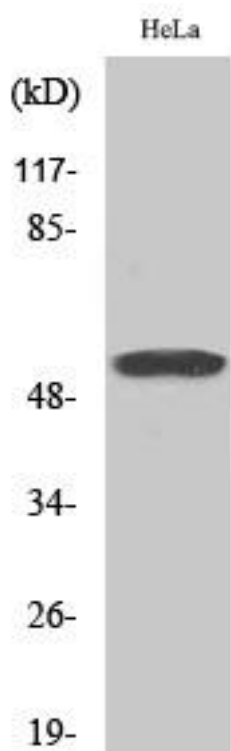
matters needing attention

Avoid repeated freezing and thawing!

Usage suggestions

This product can be used in immunological reaction related experiments. For more information, please consult technical personnel.

Products Images



Western Blot analysis of various cells using GRASP55 Monoclonal Antibody