



Endophilin B2 Monoclonal Antibody

Catalog No	BYmab-00694
Isotype	IgG
Reactivity	Human;Mouse;Rat;Monkey
Applications	WB
Gene Name	SH3GLB2
Protein Name	Endophilin-B2
Immunogen	The antiserum was produced against synthesized peptide derived from human SH3GLB2. AA range:131-180
Specificity	Endophilin B2 Monoclonal Antibody detects endogenous levels of Endophilin B2 protein.
Formulation	Liquid in PBS containing 50% glycerol, 0.5% BSA and 0.02% sodium azide.
Source	Monoclonal, Mouse,IgG
Purification	The antibody was affinity-purified from mouse antiserum by affinity-chromatography using epitope-specific immunogen.
Dilution	WB 1:500-2000
Concentration	1 mg/ml
Purity	≥90%
Storage Stability	-20°C/1 year
Synonyms	SH3GLB2; KIAA1848; PP578; Endophilin-B2; SH3 domain-containing GRB2-like protein B2
Observed Band	48kD
Cell Pathway	Cytoplasm .
Tissue Specificity	Detected in skeletal muscle, adipocyte, brain, lung, colon and mammary gland.
Function	similarity:Belongs to the endophilin family.,similarity:Contains 1 BAR domain.,similarity:Contains 1 SH3 domain.,subunit:Homodimer, and heterodimer with SH3GLB1.,tissue specificity:Detected in skeletal muscle, adipocyte, brain, lung, colon and mammary gland.,
Background	similarity:Belongs to the endophilin family.,similarity:Contains 1 BAR domain.,similarity:Contains 1 SH3 domain.,subunit:Homodimer, and heterodimer with SH3GLB1.,tissue specificity:Detected in skeletal muscle, adipocyte, brain, lung, colon and mammary gland.,

Nanjing BYabscience technology Co.,Ltd



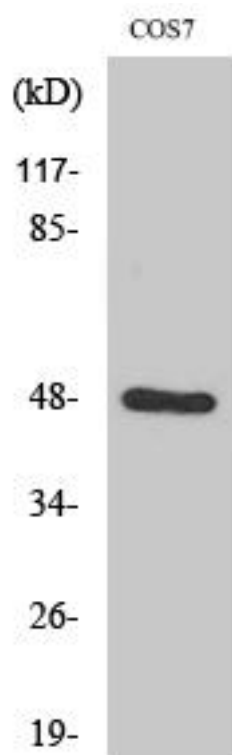
matters needing attention

Avoid repeated freezing and thawing!

Usage suggestions

This product can be used in immunological reaction related experiments. For more information, please consult technical personnel.

Products Images



Western Blot analysis of various cells using Endophilin B2 Monoclonal Antibody