



# ACSVL6 Monoclonal Antibody

<b>Catalog No</b>	BYmab-00662
<b>Isotype</b>	IgG
<b>Reactivity</b>	Human;Rat;Mouse;
<b>Applications</b>	WB
<b>Gene Name</b>	SLC27A5
<b>Protein Name</b>	Bile acyl-CoA synthetase
<b>Immunogen</b>	The antiserum was produced against synthesized peptide derived from human SLC27A5. AA range:481-530
<b>Specificity</b>	ACSVL6 Monoclonal Antibody detects endogenous levels of ACSVL6 protein.
<b>Formulation</b>	Liquid in PBS containing 50% glycerol, 0.5% BSA and 0.02% sodium azide.
<b>Source</b>	Monoclonal, Mouse,IgG
<b>Purification</b>	The antibody was affinity-purified from mouse antiserum by affinity-chromatography using epitope-specific immunogen.
<b>Dilution</b>	WB 1:500-2000
<b>Concentration</b>	1 mg/ml
<b>Purity</b>	≥90%
<b>Storage Stability</b>	-20°C/1 year
<b>Synonyms</b>	SLC27A5; ACSB; ACSVL6; FACVL3; FATP5; Bile acyl-CoA synthetase; BACS; Bile acid-CoA ligase; BA-CoA ligase; BAL; Cholate--CoA ligase; Fatty acid transport protein 5; FATP-5; Fatty-acid-coenzyme A ligase; very long-chain 3; Solute carrier fam
<b>Observed Band</b>	75kD
<b>Cell Pathway</b>	Endoplasmic reticulum membrane ; Multi-pass membrane protein . Microsome . Cell membrane ; Multi-pass membrane protein .
<b>Tissue Specificity</b>	Predominantly expressed in liver.
<b>Function</b>	catalytic activity:ATP + (25R)-3-alpha,7-alpha,12-alpha-trihydroxy-5-beta-cholestan-26-oate + CoA = AMP + diphosphate + (25R)-3-alpha,7-alpha,12-alpha-trihydroxy-5-beta-cholestanoyl-CoA.,catalytic activity:ATP + cholate + CoA = AMP + diphosphate + choloyl-CoA.,function:Acyl-CoA synthetase involved in bile acid metabolism. Proposed to catalyze the first step in the conjugation of C24 bile acids

**Nanjing BYabscience technology Co.,Ltd**



(choloneates) to glycine and taurine before excretion into bile canaliculi by activating them to their CoA thioesters. Seems to activate secondary bile acids entering the liver from the enterohepatic circulation. In vitro, also activates 3-alpha,7-alpha,12-alpha-trihydroxy-5-beta-cholestanate (THCA), the C27 precursor of cholic acid deriving from the de novo synthesis from cholesterol.,similarity:Belongs to the ATP-dependent AMP-binding enzyme family.,tissue specificity:Predominantly expressed in l

## Background

The protein encoded by this gene is an isozyme of very long-chain acyl-CoA synthetase (VLCS). It is caMABLE of activating very long-chain fatty-acids containing 24- and 26-carbons. It is expressed in liver and associated with endoplasmic reticulum but not with peroxisomes. Its primary role is in fatty acid elongation or complex lipid synthesis rather than in degradation. This gene has a mouse ortholog. [provided by RefSeq, Jul 2008],

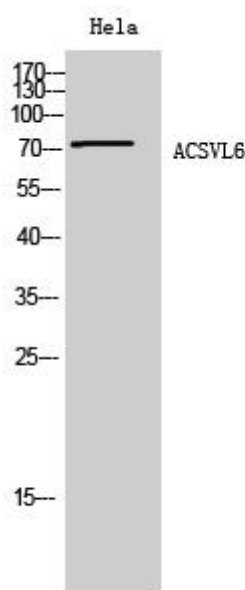
## matters needing attention

Avoid repeated freezing and thawing!

## Usage suggestions

This product can be used in immunological reaction related experiments. For more information, please consult technical personnel.

## Products Images



Western Blot analysis of various cells using ACSVL6 Monoclonal Antibody