



# ACBD6 Monoclonal Antibody

<b>Catalog No</b>	BYmab-00660
<b>Isotype</b>	IgG
<b>Reactivity</b>	Human;Mouse;Rat
<b>Applications</b>	WB
<b>Gene Name</b>	ACBD6
<b>Protein Name</b>	Acyl-CoA-binding domain-containing protein 6
<b>Immunogen</b>	The antiserum was produced against synthesized peptide derived from human ACBD6. AA range:121-170
<b>Specificity</b>	ACBD6 Monoclonal Antibody detects endogenous levels of ACBD6 protein.
<b>Formulation</b>	Liquid in PBS containing 50% glycerol, 0.5% BSA and 0.02% sodium azide.
<b>Source</b>	Monoclonal, Mouse,IgG
<b>Purification</b>	The antibody was affinity-purified from mouse antiserum by affinity-chromatography using epitope-specific immunogen.
<b>Dilution</b>	WB 1:500-2000
<b>Concentration</b>	1 mg/ml
<b>Purity</b>	≥90%
<b>Storage Stability</b>	-20°C/1 year
<b>Synonyms</b>	ACBD6; Acyl-CoA-binding domain-containing protein 6
<b>Observed Band</b>	30kD
<b>Cell Pathway</b>	Cytoplasm .
<b>Tissue Specificity</b>	Detected in placenta and spleen (at protein level). Detected in placenta, umbilical cord blood, CD34-positive hematopoietic progenitor cells and bone marrow.
<b>Function</b>	function:Binds long-chain acyl-coenzyme A molecules with a strong preference for unsaturated C18:1-CoA, lower affinity for unsaturated C20:4-CoA, and very weak affinity for saturated C16:0-CoA. Does not bind fatty acids.,similarity:Contains 1 ACB (acyl-CoA-binding) domain.,similarity:Contains 2 ANK repeats.,subunit:Monomer.,tissue specificity:Detected in placenta and spleen (at protein level). Detected in placenta, umbilical cord blood, CD34-positive hematopoietic progenitor cells and bone marrow.,
<b>Background</b>	function:Binds long-chain acyl-coenzyme A molecules with a strong preference for unsaturated C18:1-CoA, lower affinity for unsaturated C20:4-CoA, and very weak affinity for saturated C16:0-CoA. Does not bind fatty acids.,similarity:Contains 1

**Nanjing BYabscience technology Co.,Ltd**



ACB (acyl-CoA-binding) domain.,similarity:Contains 2 ANK repeats.,subunit:Monomer.,tissue specificity:Detected in placenta and spleen (at protein level). Detected in placenta, umbilical cord blood, CD34-positive hematopoietic progenitor cells and bone marrow.,

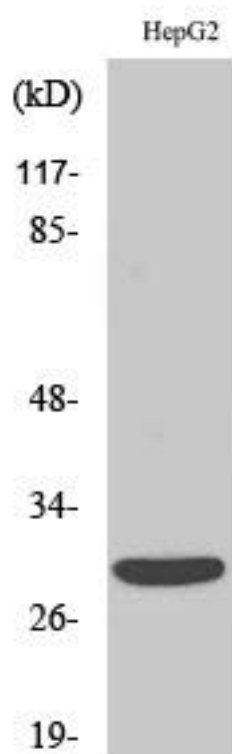
**matters needing attention**

Avoid repeated freezing and thawing!

**Usage suggestions**

This product can be used in immunological reaction related experiments. For more information, please consult technical personnel.

## Products Images



Western Blot analysis of various cells using ACBD6 Monoclonal Antibody