



# ABCB10 Monoclonal Antibody

<b>Catalog No</b>	BYmab-00651
<b>Isotype</b>	IgG
<b>Reactivity</b>	Human;Rat;Mouse;
<b>Applications</b>	WB
<b>Gene Name</b>	ABCB10
<b>Protein Name</b>	ATP-binding cassette sub-family B member 10 mitochondrial
<b>Immunogen</b>	The antiserum was produced against synthesized peptide derived from human ABCB10. AA range:441-490
<b>Specificity</b>	ABCB10 Monoclonal Antibody detects endogenous levels of ABCB10 protein.
<b>Formulation</b>	Liquid in PBS containing 50% glycerol, 0.5% BSA and 0.02% sodium azide.
<b>Source</b>	Monoclonal, Mouse,IgG
<b>Purification</b>	The antibody was affinity-purified from mouse antiserum by affinity-chromatography using epitope-specific immunogen.
<b>Dilution</b>	WB 1:500-2000
<b>Concentration</b>	1 mg/ml
<b>Purity</b>	≥90%
<b>Storage Stability</b>	-20°C/1 year
<b>Synonyms</b>	ABCB10; ATP-binding cassette sub-family B member 10; mitochondrial; ATP-binding cassette transporter 10; ABC transporter 10 protein; Mitochondrial ATP-binding cassette 2; M-ABC2
<b>Observed Band</b>	79kD
<b>Cell Pathway</b>	Mitochondrion inner membrane ; Multi-pass membrane protein .
<b>Tissue Specificity</b>	Ubiquitous. Highly expressed in bone marrow, expressed at intermediate to high levels in skeletal muscle, small intestine, thyroid, heart, brain, placenta, liver, pancreas, prostate, testis, ovary, leukocyte, stomach, spinal cord, lymph node, trachea and adrenal gland, and low levels are found in lung, kidney, spleen, thymus and colon.
<b>Function</b>	function:May mediate critical mitochondrial transport functions related to heme biosynthesis.,similarity:Belongs to the ABC transporter family.,similarity:Belongs to the ABC transporter family. Mitochondrial peptide exporter (TC 3.A.1.212) subfamily.,similarity:Contains 1 ABC transmembrane type-1 domain.,similarity:Contains 1 ABC transporter domain.,subunit:Homodimer or heterodimer .,tissue specificity:Ubiquitous. Highly expressed in bone marrow,

**Nanjing BYabscience technology Co.,Ltd**



expressed at intermediate to high levels in skeletal muscle, small intestine, thyroid, heart, brain, placenta, liver, pancreas, prostate, testis, ovary, leukocyte, stomach, spinal cord, lymph node, trachea and adrenal gland, and low levels are found in lung, kidney, spleen, thymus and colon.,

#### Background

The membrane-associated protein encoded by this gene is a member of the superfamily of ATP-binding cassette (ABC) transporters. ABC proteins transport various molecules across extra- and intra-cellular membranes. ABC genes are divided into seven distinct subfamilies (ABC1, MDR/TAP, MRP, ALD, OABP, GCN20, White). This protein is a member of the MDR/TAP subfamily. Members of the MDR/TAP subfamily are involved in multidrug resistance. The function of this mitochondrial protein is unknown. [provided by RefSeq, Jul 2008],

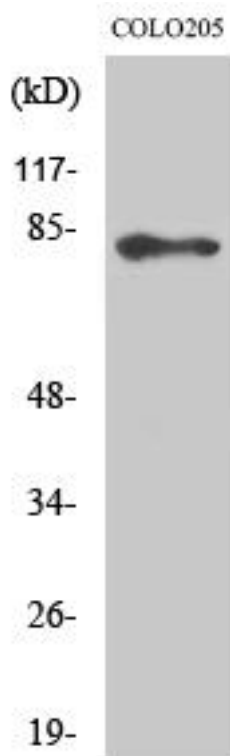
#### matters needing attention

Avoid repeated freezing and thawing!

#### Usage suggestions

This product can be used in immunological reaction related experiments. For more information, please consult technical personnel.

## Products Images



Western Blot analysis of various cells using ABCB10 Monoclonal Antibody