



MUM1 Monoclonal Antibody

Catalog No	BYmab-00586
Isotype	IgG
Reactivity	Human;Mouse;Rat
Applications	WB
Gene Name	MUM1 EXPAND1
Protein Name	MUM1
Immunogen	The antiserum was produced against synthesized peptide derived from the C-terminal region of human MUM1. AA range:661-710
Specificity	MUM1 Monoclonal Antibody detects endogenous levels of MUM1
Formulation	Liquid in PBS containing 50% glycerol, 0.5% BSA and 0.02% sodium azide.
Source	Monoclonal, Mouse,IgG
Purification	The antibody was affinity-purified from mouse antiserum by affinity-chromatography using epitope-specific immunogen.
Dilution	WB 1:500-2000
Concentration	1 mg/ml
Purity	≥90%
Storage Stability	-20°C/1 year
Synonyms	melanoma associated antigen (mutated) 1
Observed Band	78kD
Cell Pathway	Nucleus . Recruited to DNA damage sites via its interaction with the BRCT domain of TP53BP1.
Tissue Specificity	Brain,Melanoma,Placenta,PNS,Thyroid,
Function	PTM:Phosphorylated upon DNA damage, probably by ATM or ATR.,similarity:Belongs to the MUM1 family.,
Background	PTM:Phosphorylated upon DNA damage, probably by ATM or ATR.,similarity:Belongs to the MUM1 family.,
matters needing attention	Avoid repeated freezing and thawing!

Nanjing BYabscience technology Co.,Ltd

网址: www.njbybio.com

官方热线: 025-5229-8998

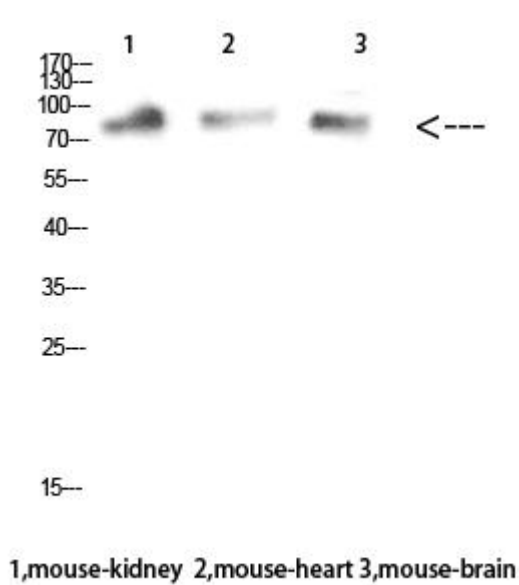
监督电话: 15950492658



Usage suggestions

This product can be used in immunological reaction related experiments. For more information, please consult technical personnel.

Products Images



Western Blot analysis of various cells using MUM1 Monoclonal Antibody