



Bag-1 Monoclonal Antibody

Catalog No	BYmab-00575
Isotype	IgG
Reactivity	Human;Rat;Mouse;
Applications	WB
Gene Name	BAG1
Protein Name	BAG family molecular chaperone regulator 1
Immunogen	The antiserum was produced against synthesized peptide derived from the Internal region of human BAG1. AA range:41-90
Specificity	Bag-1 Monoclonal Antibody detects endogenous levels of Bag-1 protein.
Formulation	Liquid in PBS containing 50% glycerol, 0.5% BSA and 0.02% sodium azide.
Source	Monoclonal, Mouse,IgG
Purification	The antibody was affinity-purified from mouse antiserum by affinity-chromatography using epitope-specific immunogen.
Dilution	WB 1:500-2000
Concentration	1 mg/ml
Purity	≥90%
Storage Stability	-20°C/1 year
Synonyms	BAG1; HAP; BAG family molecular chaperone regulator 1; BAG-1; Bcl-2-associated athanogene 1
Observed Band	35kD
Cell Pathway	[Isoform 1]: Nucleus. Cytoplasm. Isoform 1 localizes predominantly to the nucleus.; [Isoform 2]: Cytoplasm. Nucleus. Isoform 2 localizes to the cytoplasm and shuttles into the nucleus in response to heat shock.; [Isoform 4]: Cytoplasm. Nucleus. Isoform 4 localizes predominantly to the cytoplasm. The cellular background in which it is expressed can influence whether it resides primarily in the cytoplasm or is also found in the nucleus. In the presence of BCL2, localizes to intracellular membranes (what appears to be the nuclear envelope and perinuclear membranes) as well as punctate cytosolic structures suggestive of mitochondria.
Tissue Specificity	Isoform 4 is the most abundantly expressed isoform. It is ubiquitously expressed throughout most tissues, except the liver, colon, breast and uterine myometrium. Isoform 1 is expressed in the ovary and testis. Isoform 4 is expressed in several types of tumor cell lines, and at consistently high levels in leukemia and lymphoma cell lines. Isoform 1 is expressed in the prostate, breast and leukemia

Nanjing BYabs science technology Co.,Ltd



cell lines. Isoform 3 is the least abundant isoform in tumor cell lines (at protein level).

Function

disease:May be linked to the cryptophthalmos syndrome (Fraser syndrome), an autosomal recessive disorder characterized by the failure of eyes fissures to form during embryogenesis, webbed fingers, and atresia of ear canals, anus, vagina, alimentary tract, or larynx. All these developmental processes require cell death.,function:Inhibits the chaperone activity of HSP70/HSC70 by promoting substrate release. Inhibits the pro-apoptotic function of PPP1R15A, and has anti-apoptotic activity. Markedly increases the anti-cell death function of BCL2 induced by various stimuli.,PTM:Ubiquitinated; mediated by SIAH1 or SIAH2 and leading to its subsequent proteasomal degradation.,similarity:Contains 1 BAG domain.,similarity:Contains 1 ubiquitin-like domain.,subcellular location:Isoform2 localizes to the cytoplasm and shuttles into the nucleus in response to heat shock.,subunit:Binds to the ATPase dom

Background

The oncogene BCL2 is a membrane protein that blocks a step in a pathway leading to apoptosis or programmed cell death. The protein encoded by this gene binds to BCL2 and is referred to as BCL2-associated athanogene. It enhances the anti-apoptotic effects of BCL2 and represents a link between growth factor receptors and anti-apoptotic mechanisms. Multiple protein isoforms are encoded by this mRNA through the use of a non-AUG (CUG) initiation codon, and three alternative downstream AUG initiation codons. A related pseudogene has been defined on chromosome X. [provided by RefSeq, Feb 2010],

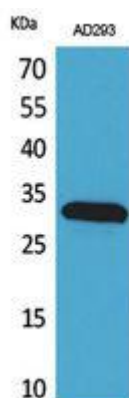
matters needing attention

Avoid repeated freezing and thawing!

Usage suggestions

This product can be used in immunological reaction related experiments. For more information, please consult technical personnel.

Products Images



Western Blot analysis of various cells using Bag-1 Monoclonal Antibody