



Latexin Monoclonal Antibody

Catalog No	BYmab-00562
Isotype	IgG
Reactivity	Human;Mouse;Rat
Applications	WB
Gene Name	LXN
Protein Name	Latexin
Immunogen	Synthesized peptide derived from Latexin . at AA range: 90-170
Specificity	Latexin Monoclonal Antibody detects endogenous levels of Latexin protein.
Formulation	Liquid in PBS containing 50% glycerol, 0.5% BSA and 0.02% sodium azide.
Source	Monoclonal, Mouse,IgG
Purification	The antibody was affinity-purified from mouse antiserum by affinity-chromatography using epitope-specific immunogen.
Dilution	WB 1:500-2000
Concentration	1 mg/ml
Purity	≥90%
Storage Stability	-20°C/1 year
Synonyms	LXN; Latexin; Endogenous carboxypeptidase inhibitor; ECI; Protein MUM; Tissue carboxypeptidase inhibitor; TCI
Observed Band	25kD
Cell Pathway	Cytoplasm .
Tissue Specificity	Highly expressed in heart, prostate, ovary, kidney, pancreas, and colon, moderate or low in other tissues including brain.
Function	function:Hardly reversible, non-competitive, and potent inhibitor of CPA1, CPA2 and CPA4.,similarity:Belongs to the protease inhibitor I47 (latexin) family.,tissue specificity:Highly expressed in heart, prostate, ovary, kidney, pancreas, and colon, moderate or low in other tissues including brain.,
Background	This gene encodes the only known protein inhibitor of zinc-dependent metallocarboxypeptidases. [provided by RefSeq, Oct 2008],
matters needing attention	Avoid repeated freezing and thawing!

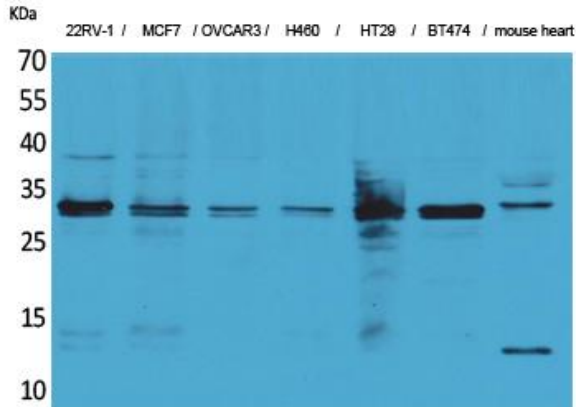
Nanjing BYabscience technology Co.,Ltd



Usage suggestions

This product can be used in immunological reaction related experiments. For more information, please consult technical personnel.

Products Images



Western Blot analysis of various cells using Latexin Monoclonal Antibody