



# TUSC2 Monoclonal Antibody

<b>Catalog No</b>	BYmab-00545
<b>Isotype</b>	IgG
<b>Reactivity</b>	Human;Mouse
<b>Applications</b>	WB
<b>Gene Name</b>	TUSC2
<b>Protein Name</b>	Tumor suppressor candidate 2
<b>Immunogen</b>	The antiserum was produced against synthesized peptide derived from human TUSC2. AA range:41-90
<b>Specificity</b>	TUSC2 Monoclonal Antibody detects endogenous levels of TUSC2 protein.
<b>Formulation</b>	Liquid in PBS containing 50% glycerol, 0.5% BSA and 0.02% sodium azide.
<b>Source</b>	Monoclonal, Mouse,IgG
<b>Purification</b>	The antibody was affinity-purified from mouse antiserum by affinity-chromatography using epitope-specific immunogen.
<b>Dilution</b>	WB 1:500-2000
<b>Concentration</b>	1 mg/ml
<b>Purity</b>	≥90%
<b>Storage Stability</b>	-20°C/1 year
<b>Synonyms</b>	TUSC2; C3orf11; FUS1; LGCC; PDAP2; Tumor suppressor candidate 2; Fusion 1 protein; Fus-1 protein; PDGFA-associated protein 2
<b>Observed Band</b>	12kD
<b>Cell Pathway</b>	mitochondrion,
<b>Tissue Specificity</b>	Strong expression in heart, lung, skeletal muscle, kidney, and pancreas, followed by brain and liver, lowest levels in placenta.
<b>Function</b>	function:May function as a tumor suppressor, inhibiting colony formation, causing G1 arrest and ultimately inducing apoptosis in homozygous 3p21.3 120-kb region-deficient cells.,PTM:Myristoylation is required for tumor suppressor activity.,similarity:Belongs to the TUSC2 family.,tissue specificity:Strong expression in heart, lung, skeletal muscle, kidney, and pancreas, followed by brain and liver, lowest levels in placenta.,
<b>Background</b>	This gene is a highly conserved lung cancer candidate gene. No other information about this gene is currently available. [provided by RefSeq, Jul 2008],

**Nanjing BYabscience technology Co.,Ltd**



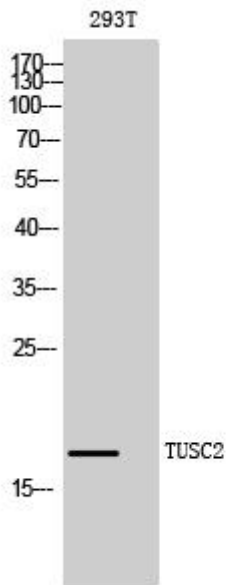
**matters needing attention**

Avoid repeated freezing and thawing!

**Usage suggestions**

This product can be used in immunological reaction related experiments. For more information, please consult technical personnel.

## Products Images



Western Blot analysis of various cells using TUSC2 Monoclonal Antibody