



TANK Monoclonal Antibody

Catalog No	BYmab-00529
Isotype	IgG
Reactivity	Human;Mouse;Rat
Applications	WB
Gene Name	TANK
Protein Name	TRAF family member-associated NF-kappa-B activator
Immunogen	The antiserum was produced against synthesized peptide derived from human TANK. AA range:171-220
Specificity	TANK Monoclonal Antibody detects endogenous levels of TANK protein.
Formulation	Liquid in PBS containing 50% glycerol, 0.5% BSA and 0.02% sodium azide.
Source	Monoclonal, Mouse,IgG
Purification	The antibody was affinity-purified from mouse antiserum by affinity-chromatography using epitope-specific immunogen.
Dilution	WB 1:500-2000
Concentration	1 mg/ml
Purity	≥90%
Storage Stability	-20°C/1 year
Synonyms	TANK; ITRAF; TRAF2; TRAF family member-associated NF-kappa-B activator; TRAF-interacting protein; I-TRAF
Observed Band	48kD
Cell Pathway	Cytoplasm.
Tissue Specificity	Ubiquitous.
Function	function:Acts as a regulator of TRAF function by maintaining them in a latent state. Overexpression inhibits TRAF2-mediated NF-kappa-B activation signaled by CD40, TNFR1 and TNFR2. Blocks TRAF2 binding to LMP1 and inhibits LMP1-mediated NF-kappa-B activation. May be involved in I-kappa-B-kinase (IKK) regulation; may function as an adapter for kinases such as TBK1 or IKBKE that can modulate IKK activity.,PTM:Phosphorylated by IKBKE.,similarity:Contains 1 C2H2-type zinc finger.,subunit:Interacts with TBK1 (via TRAF-C domain). Interacts with TRAF1 (via TRAF-C domain). Interacts with TRAF2 (via TRAF-C domain); the interaction is disrupted by the phosphorylation of TANK by IKBKE. Interacts with TRAF3 (via TRAF-C domain); the interaction

Nanjing BYabscience technology Co.,Ltd



with TRAF3 is weaker than the interactions with TRAF1 and TRAF3. Interacts with IKBKG; the interaction is enhanced by IKBKE and TBK1. Part of a ternary comple

Background

The TRAF (tumor necrosis factor receptor-associated factor) family of proteins associate with and transduce signals from members of the tumor necrosis factor receptor superfamily. The protein encoded by this gene is found in the cytoplasm and can bind to TRAF1, TRAF2, or TRAF3, thereby inhibiting TRAF function by sequestering the TRAFs in a latent state in the cytoplasm. For example, the protein encoded by this gene can block TRAF2 binding to LMP1, the Epstein-Barr virus transforming protein, and inhibit LMP1-mediated NF-kappa-B activation. Three alternatively spliced transcript variants encoding different isoforms have been found for this gene. [provided by RefSeq, Nov 2010],

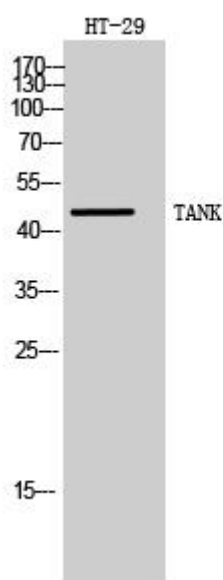
matters needing attention

Avoid repeated freezing and thawing!

Usage suggestions

This product can be used in immunological reaction related experiments. For more information, please consult technical personnel.

Products Images



Western Blot analysis of various cells using TANK Monoclonal Antibody