



# Rad51D Monoclonal Antibody

<b>Catalog No</b>	BYmab-00513
<b>Isotype</b>	IgG
<b>Reactivity</b>	Human;Rat;Mouse;
<b>Applications</b>	WB
<b>Gene Name</b>	RAD51D
<b>Protein Name</b>	DNA repair protein RAD51 homolog 4
<b>Immunogen</b>	The antiserum was produced against synthesized peptide derived from human RAD51L3. AA range:131-180
<b>Specificity</b>	Rad51D Monoclonal Antibody detects endogenous levels of Rad51D protein.
<b>Formulation</b>	Liquid in PBS containing 50% glycerol, 0.5% BSA and 0.02% sodium azide.
<b>Source</b>	Monoclonal, Mouse,IgG
<b>Purification</b>	The antibody was affinity-purified from mouse antiserum by affinity-chromatography using epitope-specific immunogen.
<b>Dilution</b>	WB 1:500-2000
<b>Concentration</b>	1 mg/ml
<b>Purity</b>	≥90%
<b>Storage Stability</b>	-20°C/1 year
<b>Synonyms</b>	RAD51D; RAD51L3; DNA repair protein RAD51 homolog 4; R51H3; RAD51 homolog D; RAD51-like protein 3; TRAD
<b>Observed Band</b>	40kD
<b>Cell Pathway</b>	Nucleus . Cytoplasm, cytoskeleton, microtubule organizing center, centrosome. Chromosome, telomere.
<b>Tissue Specificity</b>	Expressed in colon, prostate, spleen, testis, ovary, thymus and small intestine. Weakly expressed in leukocytes.
<b>Function</b>	function:Involved in the homologous recombination repair (HRR) pathway of double-stranded DNA breaks arising during DNA replication or induced by DNA-damaging agents. The BCDX2 complex binds single-stranded DNA, single-stranded gaps in duplex DNA and specifically to nicks in duplex DNA.,similarity:Belongs to the recA family. RAD51 subfamily.,subunit:Part of a BCDX2 complex consisting of RAD51B, RAD51C, RAD51D and XRCC2. Part of a complex consisting of RAD51B, RAD51C, RAD51D, XRCC2 and XRCC3. Interacts with ZSWIM7.,tissue specificity:Expressed in colon, prostate, spleen, testis, ovary, thymus and small intestine. Weakly expressed in leukocytes.,

**Nanjing BYabscience technology Co.,Ltd**



## Background

RAD51 paralog D(RAD51D) Homo sapiens The protein encoded by this gene is a member of the RAD51 protein family. RAD51 family members are highly similar to bacterial RecA and *Saccharomyces cerevisiae* Rad51, which are known to be involved in the homologous recombination and repair of DNA. This protein forms a complex with several other members of the RAD51 family, including RAD51L1, RAD51L2, and XRCC2. The protein complex formed with this protein has been shown to catalyze homologous pairing between single- and double-stranded DNA, and is thought to play a role in the early stage of recombinational repair of DNA. Alternative splicing results in multiple transcript variants. Read-through transcription also exists between this gene and the downstream ring finger and FYVE-like domain containing 1 (RFFL) gene. [provided by RefSeq, Jan 2011],

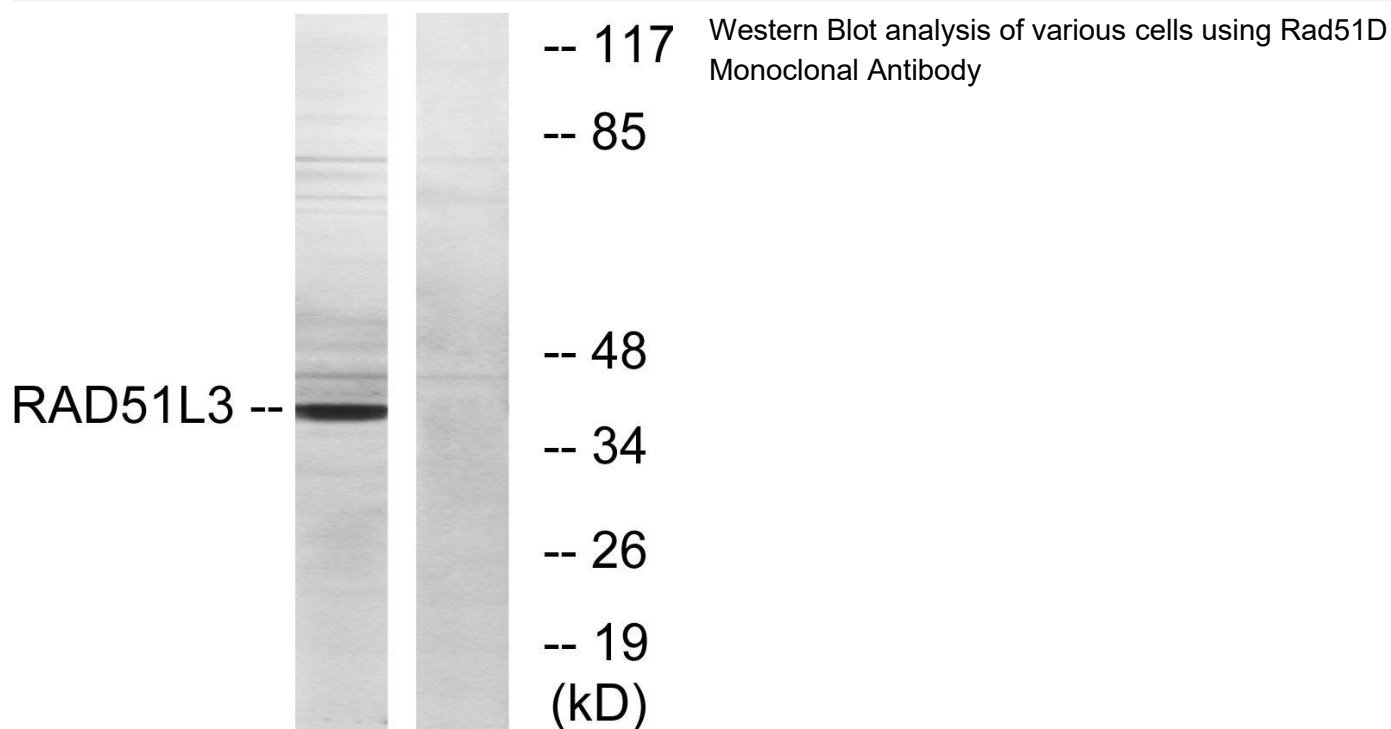
## matters needing attention

Avoid repeated freezing and thawing!

## Usage suggestions

This product can be used in immunological reaction related experiments. For more information, please consult technical personnel.

## Products Images



Nanjing BYabscience technology Co.,Ltd