



Rad18 Monoclonal Antibody

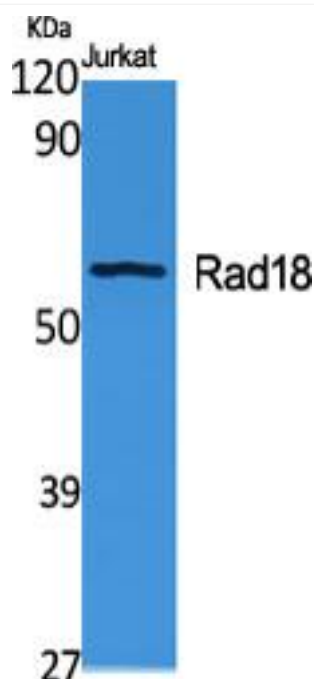
| | |
|---------------------------|--|
| Catalog No | BYmab-00505 |
| Isotype | IgG |
| Reactivity | Human;Rat |
| Applications | WB |
| Gene Name | RAD18 |
| Protein Name | E3 ubiquitin-protein ligase RAD18 |
| Immunogen | The antiserum was produced against synthesized peptide derived from human RAD18. AA range:301-350 |
| Specificity | Rad18 Monoclonal Antibody detects endogenous levels of Rad18 protein. |
| Formulation | Liquid in PBS containing 50% glycerol, 0.5% BSA and 0.02% sodium azide. |
| Source | Monoclonal, Mouse,IgG |
| Purification | The antibody was affinity-purified from mouse antiserum by affinity-chromatography using epitope-specific immunogen. |
| Dilution | WB 1:500-2000 |
| Concentration | 1 mg/ml |
| Purity | ≥90% |
| Storage Stability | -20°C/1 year |
| Synonyms | RAD18; RNF73; E3 ubiquitin-protein ligase RAD18; Postreplication repair protein RAD18; hHR18; hRAD18; RING finger protein 73 |
| Observed Band | 56kD |
| Cell Pathway | Nucleus . Cytoplasm, cytoskeleton, microtubule organizing center, centrosome . Associates with chromatin (PubMed:25931565). Colocalizes with SLF1 in the nucleus and to centrosomes (PubMed:15632077). Relocalizes with SLF1 to nuclear foci in response to DNA damage (PubMed:22036607). Accumulates with the SLF1-SLF2 and SMC5-SMC6 complexes at replication-coupled DNA interstrand repair and DNA double-strand breaks (DSBs) sites on chromatin in a ubiquitin-dependent manner (PubMed:25931565). |
| Tissue Specificity | Epithelium,Liver,Placenta, |
| Function | function:E3 ubiquitin-protein ligase involved in postreplication repair of UV-damaged DNA. Postreplication repair functions in gap-filling of a daughter strand on replication of damaged DNA. Associates to the E2 ubiquitin conjugating enzyme UBE2B to form the UBE2B-RAD18 ubiquitin ligase complex involved in mono-ubiquitination of DNA-associated PCNA on 'Lys-164'. Has ssDNA binding |

Nanjing BYabscience technology Co.,Ltd



| | |
|----------------------------------|---|
| Background | <p>activity:Protein modification; protein ubiquitination.,similarity:Belongs to the RAD18 family.,similarity:Contains 1 RING-type zinc finger.,similarity:Contains 1 SAP domain.,subunit:Interacts with UBE2A and UBE2B. Interacts with SHPRH.,</p> <p>The protein encoded by this gene is highly similar to <i>S. cerevisiae</i> DNA damage repair protein Rad18. Yeast Rad18 functions through its interaction with Rad6, which is an ubiquitin-conjugating enzyme required for post-replication repair of damaged DNA. Similar to its yeast counterpart, this protein is able to interact with the human homolog of yeast Rad6 protein through a conserved ring-finger motif. Mutation of this motif results in defective replication of UV-damaged DNA and hypersensitivity to multiple mutagens. [provided by RefSeq, Jul 2008],</p> |
| matters needing attention | Avoid repeated freezing and thawing! |
| Usage suggestions | This product can be used in immunological reaction related experiments. For more information, please consult technical personnel. |

Products Images



Western Blot analysis of various cells using Rad18 Monoclonal Antibody