



PUMA Monoclonal Antibody

Catalog No	BYmab-00503
Isotype	IgG
Reactivity	Human;Mouse;Rat
Applications	WB
Gene Name	BBC3
Protein Name	Bcl-2-binding component 3
Immunogen	The antiserum was produced against synthesized peptide derived from human PUMA. AA range:120-169
Specificity	PUMA Monoclonal Antibody detects endogenous levels of PUMA protein.
Formulation	Liquid in PBS containing 50% glycerol, 0.5% BSA and 0.02% sodium azide.
Source	Monoclonal, Mouse,IgG
Purification	The antibody was affinity-purified from mouse antiserum by affinity-chromatography using epitope-specific immunogen.
Dilution	WB 1:500-2000
Concentration	1 mg/ml
Purity	≥90%
Storage Stability	-20°C/1 year
Synonyms	BBC3; PUMA; Bcl-2-binding component 3; JFY-1; p53 up-regulated modulator of apoptosis
Observed Band	23kD
Cell Pathway	Mitochondrion . Localized to the mitochondria in order to induce cytochrome c release.
Tissue Specificity	Ubiquitously expressed.
Function	function:Essential mediator of p53-dependent and p53-independent apoptosis.,induction:By DNA damage, glucocorticoid treatment, growth factor deprivation and p53.,similarity:Belongs to the Bcl-2 family.,subcellular location:Localized to the mitochondria in order to induce cytochrome c release.,subunit:Interacts with MCL1 and BCL2A1 (By similarity). Interacts with BCL2 and BCL2L1/BCL-XL.,tissue specificity:Ubiquitously expressed.,
Background	This gene encodes a member of the BCL-2 family of proteins. This family member belongs to the BH3-only pro-apoptotic subclass. The protein cooperates with direct activator proteins to induce mitochondrial outer membrane

Nanjing BYabscience technology Co.,Ltd



permeabilization and apoptosis. It can bind to anti-apoptotic Bcl-2 family members to induce mitochondrial dysfunction and caspase activation. Because of its pro-apoptotic role, this gene is a potential drug target for cancer therapy and for tissue injury. Alternative splicing results in multiple transcript variants. [provided by RefSeq, Dec 2011],

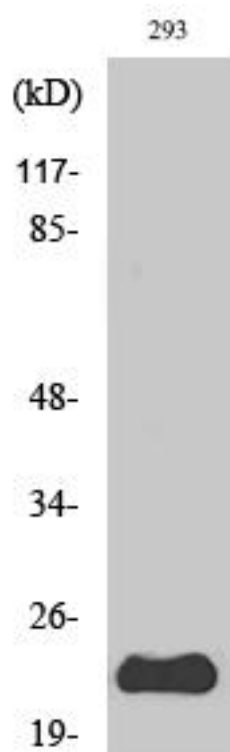
matters needing attention

Avoid repeated freezing and thawing!

Usage suggestions

This product can be used in immunological reaction related experiments. For more information, please consult technical personnel.

Products Images



Western Blot analysis of various cells using PUMA Monoclonal Antibody