



pHyde Monoclonal Antibody

Catalog No	BYmab-00492
Isotype	IgG
Reactivity	Human;Mouse;Rat
Applications	WB
Gene Name	STEAP3
Protein Name	Metalloreductase STEAP3
Immunogen	The antiserum was produced against synthesized peptide derived from human STEA3. AA range:421-470
Specificity	pHyde Monoclonal Antibody detects endogenous levels of pHyde protein.
Formulation	Liquid in PBS containing 50% glycerol, 0.5% BSA and 0.02% sodium azide.
Source	Monoclonal, Mouse,IgG
Purification	The antibody was affinity-purified from mouse antiserum by affinity-chromatography using epitope-specific immunogen.
Dilution	WB 1:500-2000
Concentration	1 mg/ml
Purity	≥90%
Storage Stability	-20°C/1 year
Synonyms	STEAP3; TSAP6; Metalloreductase STEAP3; Dudulin-2; Six-transmembrane epithelial antigen of prostate 3; Tumor suppressor-activated pathway protein 6; hTSAP6; pHyde; hpHyde
Observed Band	54kD
Cell Pathway	Endosome membrane ; Multi-pass membrane protein . Localizes to vesicular-like structures at the plasma membrane and around the nucleus.
Tissue Specificity	Expressed in adult bone marrow, placenta, liver, skeletal muscle and pancreas. Down-regulated in hepatocellular carcinoma.
Function	caution:Was initially thought to have tumor suppressor function in prostate cancer. However, it was shown that it is probably not the case (PubMed:12866033).,cofactor:FAD.,function:Endosomal ferrireductase required for efficient transferrin-dependent iron uptake in erythroid cells. Participates in erythroid iron homeostasis by reducing Fe(3+) to Fe(2+). Can also reduce of Cu(2+) to Cu(1+), suggesting that it participates in copper homeostasis. Uses NAD(+) as acceptor (By similarity). May play a role downstream of p53/TP53 to interface apoptosis and cell cycle progression. Indirectly involved in exosome

Nanjing BYabscience technology Co.,Ltd



secretion by facilitating the secretion of proteins such as TCTP.,induction:By p53/TP53.,similarity:Belongs to the STEAP family.,similarity:Contains 1 ferric oxidoreductase domain.,subcellular location:Localizes to vesicular-like structures at the plasma membrane and around the nucleus.,su

Background

STEAP3 metalloredutase(STEAP3) Homo sapiens This gene encodes a multipass membrane protein that functions as an iron transporter. The encoded protein can reduce both iron (Fe³⁺) and copper (Cu²⁺) cations. This protein may mediate downstream responses to p53, including promoting apoptosis. Deficiency in this gene can cause anemia. Alternative splicing results in multiple transcript variants. [provided by RefSeq, Aug 2015],

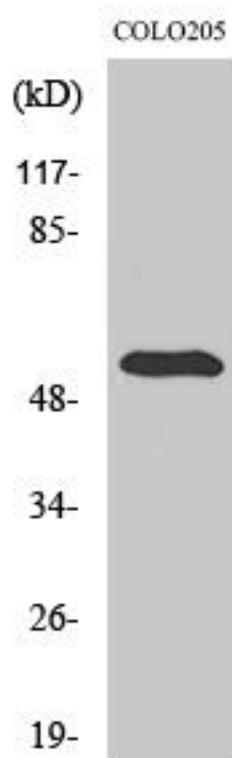
matters needing attention

Avoid repeated freezing and thawing!

Usage suggestions

This product can be used in immunological reaction related experiments. For more information, please consult technical personnel.

Products Images



Western Blot analysis of various cells using pHyde Monoclonal Antibody

Nanjing BYabscience technology Co.,Ltd