



ORAOV1 Monoclonal Antibody

Catalog No	BYmab-00469
Isotype	IgG
Reactivity	Human;Rat;Mouse;
Applications	WB
Gene Name	ORAOV1
Protein Name	Oral cancer-overexpressed protein 1
Immunogen	The antiserum was produced against synthesized peptide derived from human ORAV1. AA range:81-130
Specificity	ORAOV1 Monoclonal Antibody detects endogenous levels of ORAOV1 protein.
Formulation	Liquid in PBS containing 50% glycerol, 0.5% BSA and 0.02% sodium azide.
Source	Monoclonal, Mouse,IgG
Purification	The antibody was affinity-purified from mouse antiserum by affinity-chromatography using epitope-specific immunogen.
Dilution	WB 1:500-2000
Concentration	1 mg/ml
Purity	≥90%
Storage Stability	-20°C/1 year
Synonyms	ORAOV1; TAOS1; Oral cancer-overexpressed protein 1; Tumor-amplified and overexpressed sequence 1
Observed Band	15kD
Cell Pathway	Nucleus .
Tissue Specificity	Widely expressed. Highly expressed in placenta, kidney and skeletal muscle.
Function	miscellaneous:Amplified and overexpressed in oral cancer cells.,similarity:Belongs to the ORAOV1 family.,tissue specificity:Widely expressed. Highly expressed in placenta, kidney and skeletal muscle.,
Background	miscellaneous:Amplified and overexpressed in oral cancer cells.,similarity:Belongs to the ORAOV1 family.,tissue specificity:Widely expressed. Highly expressed in placenta, kidney and skeletal muscle.,
matters needing attention	Avoid repeated freezing and thawing!

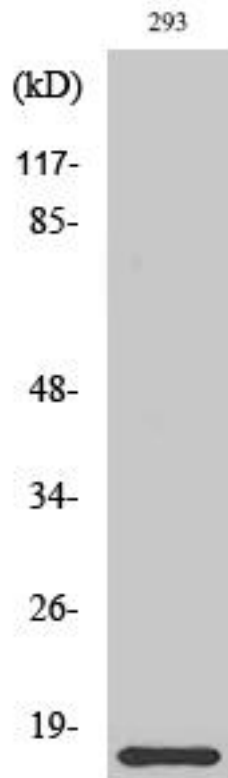
Nanjing BYabscience technology Co.,Ltd



Usage suggestions

This product can be used in immunological reaction related experiments. For more information, please consult technical personnel.

Products Images



Western Blot analysis of various cells using ORAOV1 Monoclonal Antibody

Nanjing BYabscience technology Co.,Ltd

网址: www.njbybio.com

官方热线: 025-5229-8998

监督电话: 15950492658