



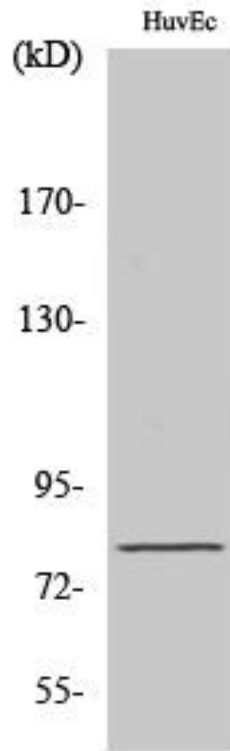
NOL10 Monoclonal Antibody

Catalog No	BYmab-00463
Isotype	IgG
Reactivity	Human;Rat;Mouse;
Applications	WB
Gene Name	NOL10
Protein Name	Nucleolar protein 10
Immunogen	The antiserum was produced against synthesized peptide derived from human NOL10. AA range:639-688
Specificity	NOL10 Monoclonal Antibody detects endogenous levels of NOL10 protein.
Formulation	Liquid in PBS containing 50% glycerol, 0.5% BSA and 0.02% sodium azide.
Source	Monoclonal, Mouse,IgG
Purification	The antibody was affinity-purified from mouse antiserum by affinity-chromatography using epitope-specific immunogen.
Dilution	WB 1:500-2000
Concentration	1 mg/ml
Purity	≥90%
Storage Stability	-20°C/1 year
Synonyms	NOL10; Nucleolar protein 10
Observed Band	80kD
Cell Pathway	Nucleus, nucleolus .
Tissue Specificity	Embryo,Placenta,
Function	similarity:Belongs to the WD repeat NOL10/ENP2 family.,similarity:Contains 5 WD repeats.,
Background	similarity:Belongs to the WD repeat NOL10/ENP2 family.,similarity:Contains 5 WD repeats.,
matters needing attention	Avoid repeated freezing and thawing!
Usage suggestions	This product can be used in immunological reaction related experiments. For more information, please consult technical personnel.

Nanjing BYabscience technology Co.,Ltd



Products Images



Western Blot analysis of various cells using NOL10
Monoclonal Antibody

Nanjing BYabs science technology Co.,Ltd

网址: www.njbybio.com

官方热线: 025-5229-8998

监督电话: 15950492658