



Mammaglobin A Monoclonal Antibody

Catalog No	BYmab-00439
Isotype	IgG
Reactivity	Human;Rat
Applications	WB
Gene Name	SCGB2A2
Protein Name	Mammaglobin-A
Immunogen	The antiserum was produced against synthesized peptide derived from human Mammaglobin. AA range:41-90
Specificity	Mammaglobin A Monoclonal Antibody detects endogenous levels of Mammaglobin A protein.
Formulation	Liquid in PBS containing 50% glycerol, 0.5% BSA and 0.02% sodium azide.
Source	Monoclonal, Mouse,IgG
Purification	The antibody was affinity-purified from mouse antiserum by affinity-chromatography using epitope-specific immunogen.
Dilution	WB 1:500-2000
Concentration	1 mg/ml
Purity	≥90%
Storage Stability	-20°C/1 year
Synonyms	SCGB2A2; MGB1; UGB2; Mammaglobin-A; Mammaglobin-1; Secretoglobin family 2A member 2
Observed Band	20kD
Cell Pathway	Secreted .
Tissue Specificity	Mammary gland specific. Over-expressed in breast cancer.
Function	similarity:Belongs to the secretoglobin family. Lipophilin subfamily.,tissue specificity:Mammary gland specific. Over-expressed in breast cancer.,
Background	similarity:Belongs to the secretoglobin family. Lipophilin subfamily.,tissue specificity:Mammary gland specific. Over-expressed in breast cancer.,
matters needing attention	Avoid repeated freezing and thawing!

Nanjing BYabscience technology Co.,Ltd

网址: www.njbybio.com

官方热线: 025-5229-8998

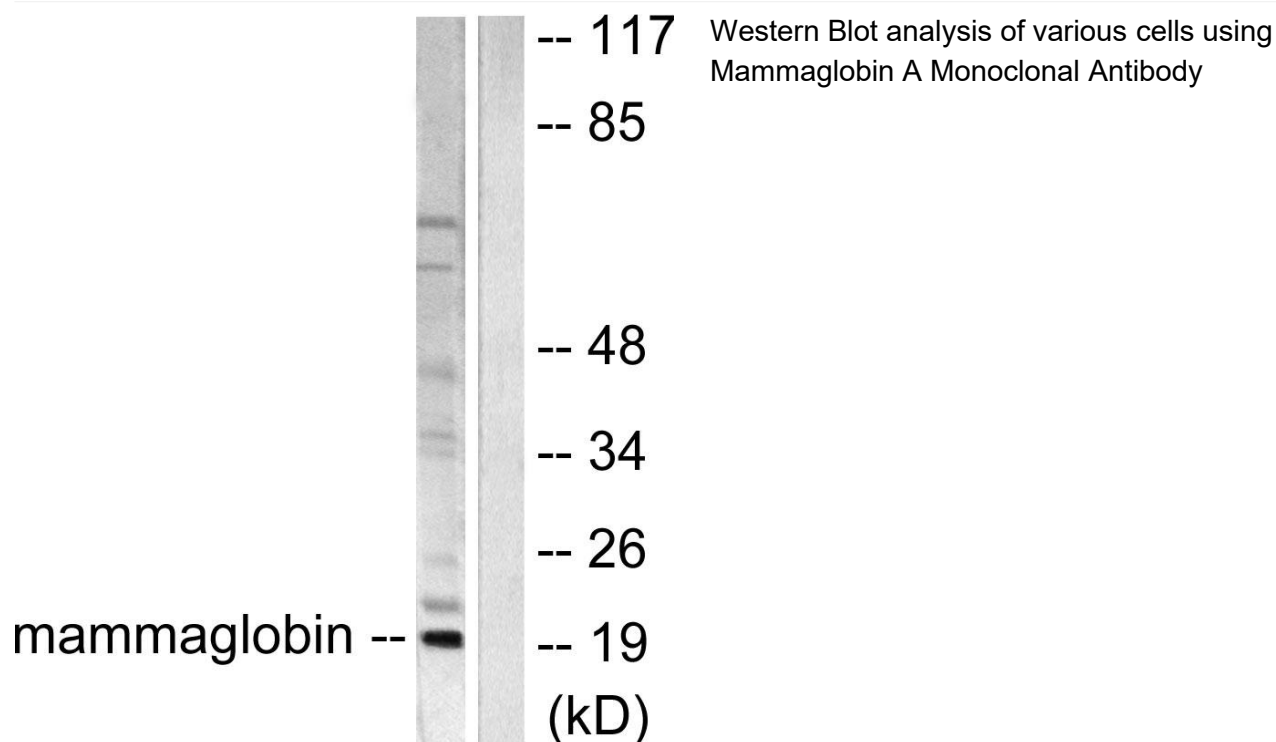
监督电话: 15950492658



Usage suggestions

This product can be used in immunological reaction related experiments. For more information, please consult technical personnel.

Products Images



Nanjing BYabs science technology Co.,Ltd

网址: www.njbybio.com

官方热线: 025-5229-8998

监督电话: 15950492658