



# MALT1 Monoclonal Antibody

|                           |  |
|---------------------------|--|
| <b>Catalog No</b>         | BYmab-00438  |
| <b>Isotype</b>            | IgG  |
| <b>Reactivity</b>         | Human;Mouse  |
| <b>Applications</b>       | WB   |
| <b>Gene Name</b>          | MALT1  |
| <b>Protein Name</b>       | Mucosa-associated lymphoid tissue lymphoma translocation protein 1   |
| <b>Immunogen</b>          | The antiserum was produced against synthesized peptide derived from human MALT1. AA range:301-350  |
| <b>Specificity</b>        | MALT1 Monoclonal Antibody detects endogenous levels of MALT1 protein.  |
| <b>Formulation</b>        | Liquid in PBS containing 50% glycerol, 0.5% BSA and 0.02% sodium azide.  |
| <b>Source</b>             | Monoclonal, Mouse,IgG  |
| <b>Purification</b>       | The antibody was affinity-purified from mouse antiserum by affinity-chromatography using epitope-specific immunogen.   |
| <b>Dilution</b>           | WB 1:500-2000  |
| <b>Concentration</b>      | 1 mg/ml  |
| <b>Purity</b>             | ≥90%   |
| <b>Storage Stability</b>  | -20°C/1 year   |
| <b>Synonyms</b>           | MALT1; MLT; Mucosa-associated lymphoid tissue lymphoma translocation protein 1; MALT lymphoma-associated translocation; Paracaspase  |
| <b>Observed Band</b>      | 90kD   |
| <b>Cell Pathway</b>       | Cytoplasm, perinuclear region . Nucleus . Shuttles between the nucleus and cytoplasm. Found in perinuclear structures together with BCL10. .   |
| <b>Tissue Specificity</b> | Highly expressed in peripheral blood mononuclear cells. Detected at lower levels in bone marrow, thymus and lymph node, and at very low levels in colon and lung.  |
| <b>Function</b>           | disease:A chromosomal aberration involving MALT1 is recurrent in low-grade mucosa-associated lymphoid tissue (MALT lymphoma). Translocation t(11;18)(q21;q21) with BIRC2. This translocation is found in approximately 50% of cytogenetically abnormal low-grade MALT lymphoma..function:Enhances BCL10-induced activation of NF-kappa-B. Involved in nuclear export of BCL10. Binds to TRAF6, inducing TRAF6 oligomerization and activation of its ligase activity. Has ubiquitin ligase activity. MALT1-dependent BCL-10 cleavage plays an important role in T-cell antigen receptor-induced integrin adhesion..similarity:Belongs to the peptidase C14B family..similarity:Contains 1 death domain..similarity:Contains 2 Ig-like C2-type (immunoglobulin-like) |

**Nanjing BYabscience technology Co.,Ltd**



domains.,subcellular location:Shuttles between the nucleus and cytoplasm. Found in perinuclear structures together with BCL10.,subunit:Binds through its Ig-like

## Background

This gene has been found to be recurrently rearranged in chromosomal translocation with two other genes - baculoviral IAP repeat-containing protein 3 (also known as apoptosis inhibitor 2) and immunoglobulin heavy chain locus - in mucosa-associated lymphoid tissue lymphomas. The protein encoded by this gene may play a role in NF-kapMAB activation. Two alternatively spliced transcript variants encoding different isoforms have been described for this gene. [provided by RefSeq, Jul 2008],

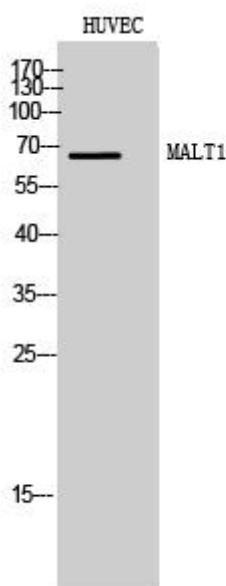
## matters needing attention

Avoid repeated freezing and thawing!

## Usage suggestions

This product can be used in immunological reaction related experiments. For more information, please consult technical personnel.

## Products Images



Western Blot analysis of various cells using MALT1 Monoclonal Antibody