



# LOST1 Monoclonal Antibody

Catalog No	BYmab-00433
Isotype	IgG
Reactivity	Human;Rat;Mouse;
Applications	WB
Gene Name	TUSC5
Protein Name	Tumor suppressor candidate 5
Immunogen	The antiserum was produced against synthesized peptide derived from human TUSC5. AA range:1-50
Specificity	LOST1 Monoclonal Antibody detects endogenous levels of LOST1 protein.
Formulation	Liquid in PBS containing 50% glycerol, 0.5% BSA and 0.02% sodium azide.
Source	Monoclonal, Mouse,IgG
Purification	The antibody was affinity-purified from mouse antiserum by affinity-chromatography using epitope-specific immunogen.
Dilution	WB 1:500-2000
Concentration	1 mg/ml
Purity	≥90%
Storage Stability	-20°C/1 year
Synonyms	TUSC5; IFITMD3; LOST1; Tumor suppressor candidate 5; Dispanin subfamily B member 1; DSPB1; Interferon-induced transmembrane domain-containing protein D3; Protein located at seventeen-p-thirteen point three 1
Observed Band	22kD
Cell Pathway	Cell membrane ; Single-pass membrane protein . Endomembrane system ; Single-pass membrane protein . Cytoplasm, perinuclear region . Shifts from low-density microsome vesicles to the cell membrane upon insulin stimulation. .
Tissue Specificity	Expressed at high levels in heart, mammary gland, adrenal gland, stomach, smooth muscle and skeletal muscle, and at lower levels in brain and lung. Strongly down-regulated in lung cancer tissues, due to hypermethylation of the corresponding locus (PubMed:12660825). Expressed in adipose tissue (PubMed:26629404).
Function	developmental stage:Expressed in fetal brain.,function:May be involved in fat metabolism.,similarity:Belongs to the CD225 family.,tissue specificity:Expressed at high levels in heart, mammary gland, adrenal gland, stomach, smooth muscle and skeletal muscle, and at lower levels in brain and lung. Strongly

Nanjing BYabscience technology Co.,Ltd



down-regulated in lung cancer tissues, due to hypermethylation of the corresponding locus.,

#### Background

developmental stage:Expressed in fetal brain.,function:May be involved in fat metabolism.,similarity:Belongs to the CD225 family.,tissue specificity:Expressed at high levels in heart, mammary gland, adrenal gland, stomach, smooth muscle and skeletal muscle, and at lower levels in brain and lung. Strongly down-regulated in lung cancer tissues, due to hypermethylation of the corresponding locus.,

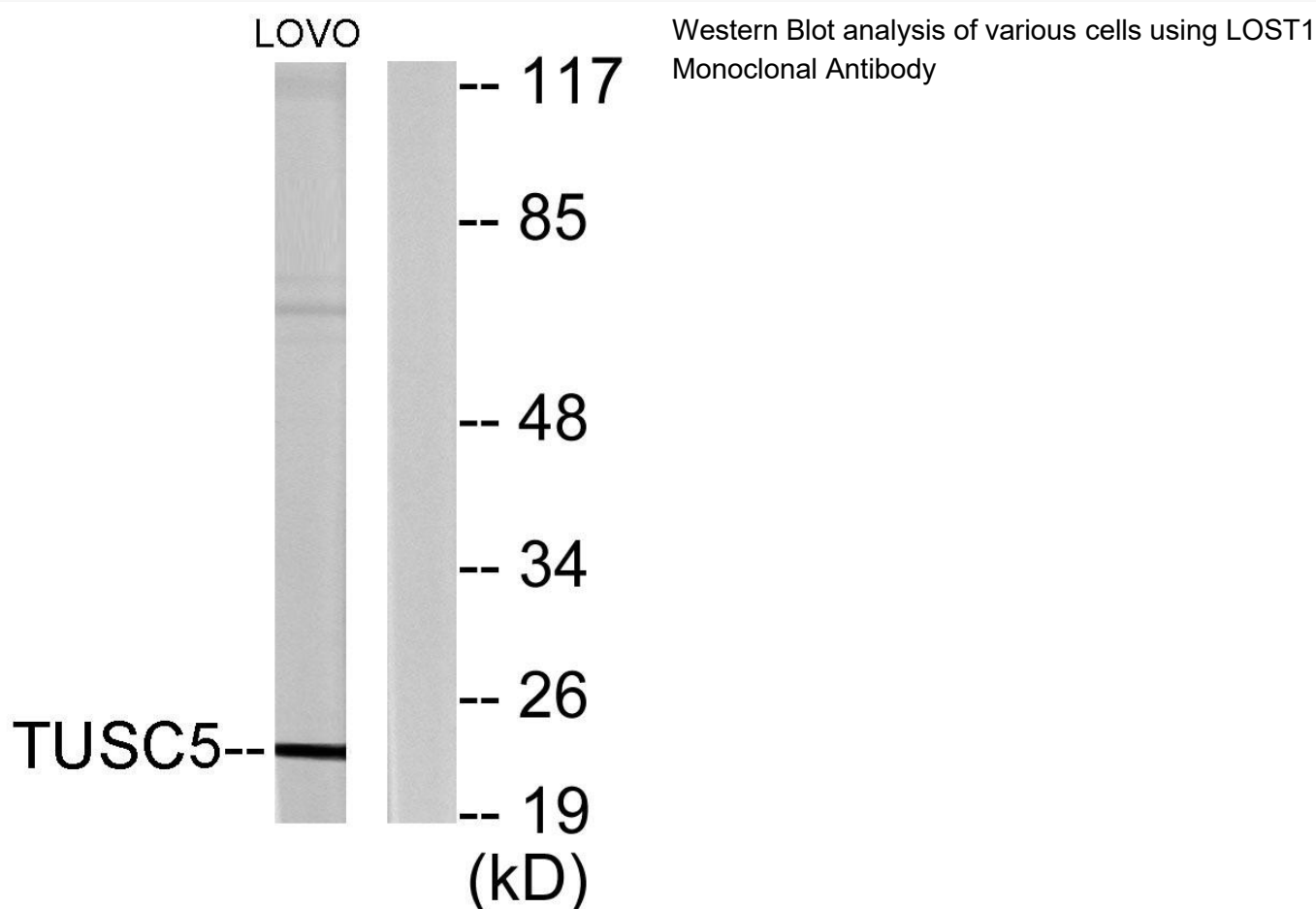
#### matters needing attention

Avoid repeated freezing and thawing!

#### Usage suggestions

This product can be used in immunological reaction related experiments. For more information, please consult technical personnel.

### Products Images



Nanjing BYabs science technology Co.,Ltd