



# FAST Monoclonal Antibody

Catalog No	BYmab-00395
Isotype	IgG
Reactivity	Human;Mouse;Rat
Applications	WB
Gene Name	FASTK
Protein Name	Fas-activated serine/threonine kinase
Immunogen	The antiserum was produced against synthesized peptide derived from human FAST. AA range:361-410
Specificity	FAST Monoclonal Antibody detects endogenous levels of FAST protein.
Formulation	Liquid in PBS containing 50% glycerol, 0.5% BSA and 0.02% sodium azide.
Source	Monoclonal, Mouse,IgG
Purification	The antibody was affinity-purified from mouse antiserum by affinity-chromatography using epitope-specific immunogen.
Dilution	WB 1:500-2000
Concentration	1 mg/ml
Purity	≥90%
Storage Stability	-20°C/1 year
Synonyms	FASTK; Fas-activated serine/threonine kinase; FAST kinase
Observed Band	61kD
Cell Pathway	[Isoform 4]: Mitochondrion matrix . Colocalizes with mitochondrial RNA granules. .
Tissue Specificity	Expressed in heart, brain, placenta, lung, liver, skeletal muscle, kidney and pancreas.
Function	catalytic activity:ATP + [Fas-activated serine/threonine protein] = ADP + [Fas-activated serine/threonine phosphoprotein]..function:Fas-mediated apoptosis is characterized by FASTK-dephosphorylation and TIA-1-phosphorylation. Both are activated and FASTK-mediated TIA-1 activation play a key role in apoptosis..PTM:Phosphorylated on serine/threonine..similarity:Belongs to the FAST protein kinase family..similarity:Contains 1 RAP domain..subunit:Interacts with TIA-1..tissue specificity:Expressed in heart, brain, placenta, lung, liver, skeletal muscle, kidney and pancreas.,

Nanjing BYabscience technology Co.,Ltd



## Background

The protein encoded by this gene is a member of the serine/threonine protein kinase family. This kinase was shown to be activated rapidly during Fas-mediated apoptosis in Jurkat cells. In response to Fas receptor ligation, it phosphorylates TIA1, an apoptosis-promoting nuclear RNA-binding protein. The encoded protein is a strong inducer of lymphocyte apoptosis. Two transcript variants encoding different isoforms have been found for this gene. Other variants exist, but their full-length natures have not yet been determined. [provided by RefSeq, Jul 2008],

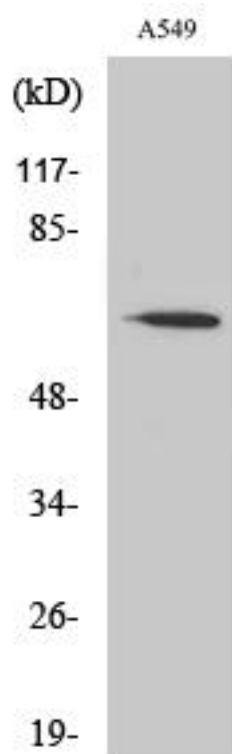
## matters needing attention

Avoid repeated freezing and thawing!

## Usage suggestions

This product can be used in immunological reaction related experiments. For more information, please consult technical personnel.

## Products Images



Western Blot analysis of various cells using FAST Monoclonal Antibody