



# DOC-1 Monoclonal Antibody

Catalog No	BYmab-00383
Isotype	IgG
Reactivity	Human;Mouse
Applications	WB
Gene Name	CDK2AP1
Protein Name	Cyclin-dependent kinase 2-associated protein 1
Immunogen	The antiserum was produced against synthesized peptide derived from human CDKAP1. AA range:51-100
Specificity	DOC-1 Monoclonal Antibody detects endogenous levels of DOC-1 protein.
Formulation	Liquid in PBS containing 50% glycerol, 0.5% BSA and 0.02% sodium azide.
Source	Monoclonal, Mouse,IgG
Purification	The antibody was affinity-purified from mouse antiserum by affinity-chromatography using epitope-specific immunogen.
Dilution	WB 1:500-2000
Concentration	1 mg/ml
Purity	≥90%
Storage Stability	-20°C/1 year
Synonyms	CDK2AP1; CDKAP1; DOC1; Cyclin-dependent kinase 2-associated protein 1; CDK2-associated protein 1; Deleted in oral cancer 1; DOC-1; Putative oral cancer suppressor
Observed Band	20kD
Cell Pathway	nucleus,perinuclear region of cytoplasm,
Tissue Specificity	Skin,Testis,
Function	similarity:Belongs to the CDK2AP family.,
Background	cyclin dependent kinase 2 associated protein 1(CDK2AP1) Homo sapiens The protein encoded by this gene is a cyclin-dependent kinase 2 (CDK2)-associated protein which is thought to negatively regulate CDK2 activity by sequestering monomeric CDK2, and targeting CDK2 for proteolysis. This protein was found to also interact with DNA polymerase alpha/primase and mediate the phosphorylation of the large p180 subunit, which suggests a regulatory role in

Nanjing BYabscience technology Co.,Ltd



DNA replication during the S-phase of the cell cycle. This protein also forms a core subunit of the nucleosome remodeling and histone deacetylation (NURD) complex that epigenetically regulates embryonic stem cell differentiation. This gene thus plays a role in both cell-cycle and epigenetic regulation. Alternative splicing results in multiple transcript variants encoding distinct isoforms. [provided by RefSeq, Jul 2012],

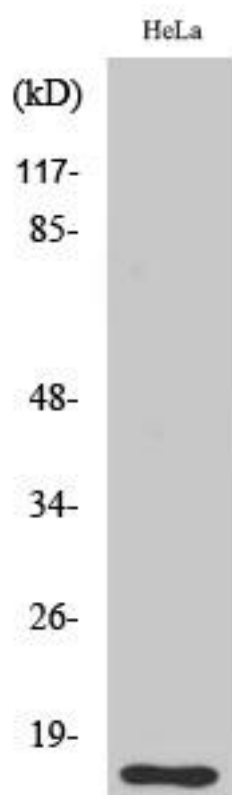
**matters needing attention**

Avoid repeated freezing and thawing!

**Usage suggestions**

This product can be used in immunological reaction related experiments. For more information, please consult technical personnel.

## Products Images



Western Blot analysis of various cells using DOC-1 Monoclonal Antibody