



DNA Ligase III Monoclonal Antibody

| | |
|--------------------|--|
| Catalog No | BYmab-00379 |
| Isotype | IgG |
| Reactivity | Human;Mouse;Rat |
| Applications | WB |
| Gene Name | LIG3 |
| Protein Name | DNA ligase 3 |
| Immunogen | Synthesized peptide derived from DNA Ligase III . at AA range: 110-190 |
| Specificity | DNA Ligase III Monoclonal Antibody detects endogenous levels of DNA Ligase III protein. |
| Formulation | Liquid in PBS containing 50% glycerol, 0.5% BSA and 0.02% sodium azide. |
| Source | Monoclonal, Mouse,IgG |
| Purification | The antibody was affinity-purified from mouse antiserum by affinity-chromatography using epitope-specific immunogen. |
| Dilution | WB 1:500-2000 |
| Concentration | 1 mg/ml |
| Purity | ≥90% |
| Storage Stability | -20°C/1 year |
| Synonyms | LIG3; DNA ligase 3; DNA ligase III; Polydeoxyribonucleotide synthase [ATP] 3 |
| Observed Band | 100kD |
| Cell Pathway | [Isoform 1]: Mitochondrion . Contains an N-terminal mitochondrial transit peptide. .; [Isoform 2]: Mitochondrion . Contains an N-terminal mitochondrial transit peptide. .; [Isoform 3]: Nucleus . Lacks the N-terminal mitochondrial transit peptide. .; [Isoform 4]: Nucleus . Lacks the N-terminal mitochondrial transit peptide. . |
| Tissue Specificity | Testis, thymus, prostate and heart. |
| Function | catalytic activity:ATP + (deoxyribonucleotide)(n) + (deoxyribonucleotide)(m) = AMP + diphosphate + (deoxyribonucleotide)(n+m).,cofactor:Magnesium.,function:Interacts with DNA-repair protein XRCC1 and can correct defective DNA strand-break repair and sister chromatid exchange following treatment with ionizing radiation and alkylating agents.,online information:DNA ligase entry,similarity:Belongs to the ATP-dependent DNA ligase family.,similarity:Contains 1 BRCT domain.,similarity:Contains 1 PARP-type zinc finger.,tissue specificity:Testis, |

Nanjing BYabscience technology Co.,Ltd



thymus, prostate and heart.,

Background

This gene is a member of the DNA ligase family. Each member of this family encodes a protein that catalyzes the joining of DNA ends but they each have a distinct role in DNA metabolism. The protein encoded by this gene is involved in excision repair and is located in both the mitochondria and nucleus, with translation initiation from the upstream start codon allowing for transport to the mitochondria and translation initiation from a downstream start codon allowing for transport to the nucleus. Additionally, alternate transcriptional splice variants, encoding different isoforms, have been characterized. [provided by RefSeq, Jul 2008],

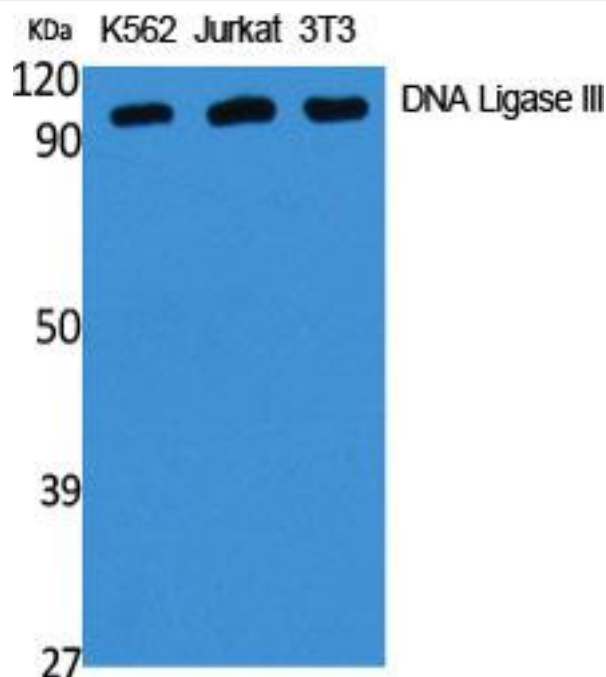
matters needing attention

Avoid repeated freezing and thawing!

Usage suggestions

This product can be used in immunological reaction related experiments. For more information, please consult technical personnel.

Products Images



Western Blot analysis of various cells using DNA Ligase III Monoclonal Antibody

Nanjing BYabs science technology Co.,Ltd

网址: www.njbybio.com

官方热线: 025-5229-8998

监督电话: 15950492658